

BOX FLAP

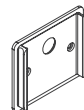
ACCESSORY FOR BOX WALL

12-12-2014

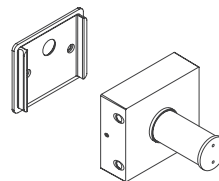
ACCESSORY FOR BOX WALL

flaps for adjustable beam angle
900401W0

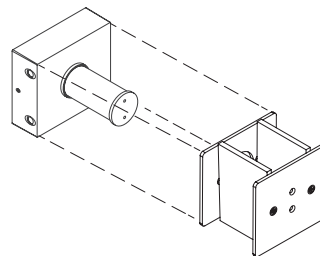
②



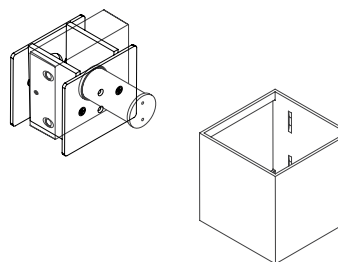
④



⑤



⑥



① MOUNTING INSTRUCTION

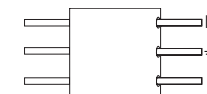
Remove the lamp base

② Fixate the back plate to the wall with screws

③ POWER CONNECTION

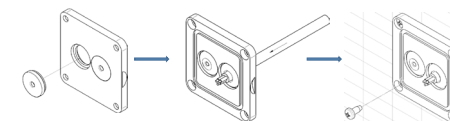
Connect the power supply.

Interior: STANDARD version



Exterior: WATERPROOF Connection

IP-rated connections for wall fixtures: cable isolation for round cables \varnothing 4.5-7.5 mm, should be in the grommet. For cable use \varnothing 7.0-9.5 mm: replace the grommet with the other grommet in the bag.



Push the grommet into the back plate.

Pull the cable through the back plate.

Mount the back plate on the wall.

④ Fixate the lamp base to the back plate.

⑤ Mount the flap over the fixture base and fixate it with screws

⑥ Fixate the lamp cover to the back base.



WEVER & DUCRÉ
LIGHTING

www.weverducre.com

INSTALLATION
INSTRUCTIONS