

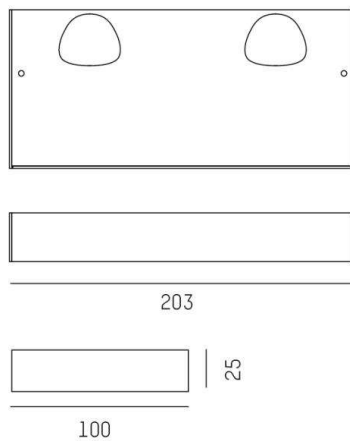
AKON SD

661-003020523050

AKON WALL / CEILING LUMINAIRE made of die-cast aluminium, white, similar to RAL 9016, microfaceted free-form reflector light output direct, max. 350mA, IP20



DRAWING

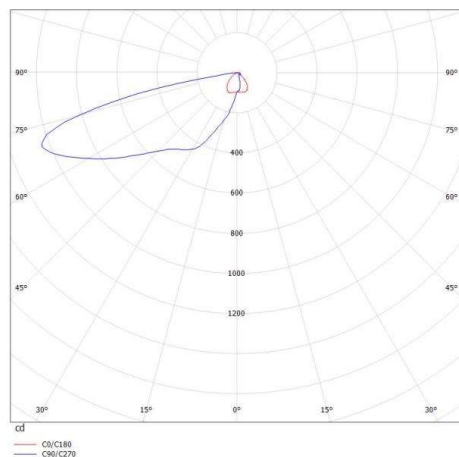


TECHNICAL DETAILS

System perform. [W]	10
Bulb type	LED
Luminous flux [lm]	560
Current sec. [mA]	350
Colour temp. [K]	2700K
CRI	>90
Optics	microfaceted free-form reflector
Designer	INHOUSE
Light output	direct
Voltage [V]	220-240V 50/60Hz
Material	die-cast aluminium

Length [mm]	203
Width [mm]	100
Height [mm]	25
IP protection class	IP20
Voltage class	protection cl. I
Net weight [kg]	0,66907

LIGHT DISTRIBUTION CURVE



Color	white
RAL	9016
EAN-Number	9008905723582
Lifetime [h]	50 000 L80 B10
Energy efficiency cl.	A++-A

The values are rated values. Power and luminous flux are initially subject to a tolerance of +/- 10%. Colour temperature tolerance: +/- 150 K. The values apply to an ambient temperature of 25°C unless otherwise specified.