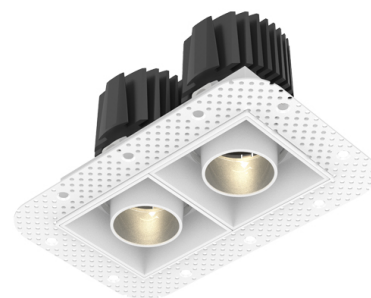


## KSA3D-EI + LED Module



Manufacture: NEKO LIGHTING AG

Type: CLUB Downlight System M4-9272013F-KSA3D-EI-WWM

### General

- Indoor
- Downlight
- Recessed
- Version: trimless square (Easy Installation)
- Housing: white
- Reflector: matt
- IP 20 - (LED Module IP 54)

### LED

- 2700K
- CRI 90
- LED Output: 2\*1300lm
- System Output: 2\*740lm
- 50000h@L80B10
- SDCM: 3



### Description

Square recessed double head spotlight made of die-cast aluminium with white powder-coating finish (RAL 9016) and matt reflector; ON-OFF Driver; System Power 2\*15W; measurement 140mm x 72mm; ceiling cutout of 147mm x 80mm for trimless installation (Easy Installation); rotation 355° and pivot max. 18°; CCT 2700K with a System Luminous Flux of 2\*740lm; high color rendering at an index of CRI90; after a lifetime of 50000h L80B10 min. 80% of the luminous flux with energy efficient CITIZEN LED Chips; 5 years warranty; beam characteristic with 20° beam angle; lighting perfectly suitable for reading, writing as well as computer and control work with UGR<19; degree of housing protection IP20 (LED Module IP54); impact resistance of the luminaire is in the class IK06; light source replaceable by a qualified electrician; driver replaceable by a qualified electrician

### Optics

- Beam angle: 20°
- UGR <19

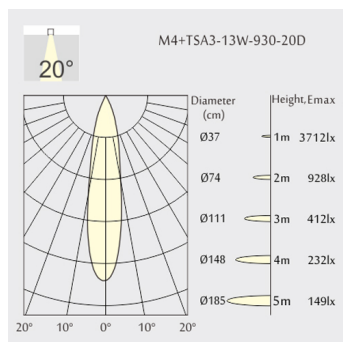
### Electric

- LED Driver: ON-OFF
- LED Power: 2\*13W
- System Power: 2\*15W
- 2\*36V
- 350mA

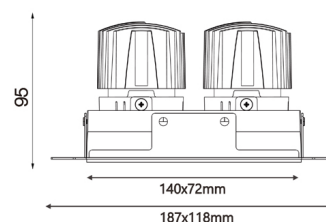
### Dimensions

- Measurement: 140mm x 72mm
- Cutout: 147mm x 80mm
- Height: 95mm
- Ceiling height: 145mm
- Pivot: max. 18°
- Rotation: 355°

### Light distribution



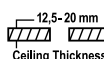
### Technical drawing



RoHS



147x80mm



The technical data represent rated values for an ambient temperature of 25°C. The data values for the luminous flux are initially subject to a tolerance of +/- 10%, those for the electrical connected load are initially subject to a tolerance of +/- 10%, and those for the colour temperature are initially subject to a tolerance of +/- 150 K. No liability is assumed for typographical or printing errors. The general terms and conditions of NEKO Lighting AG apply.