

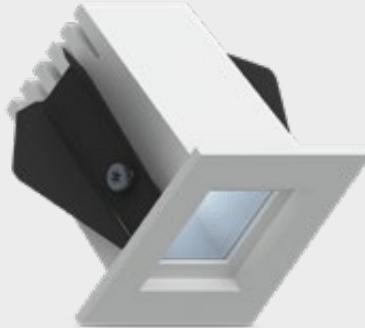
FEATURES

- Bartenbach 'Dark Light' technology
- Low UGR levels combined with high light output

Bartenbach[®]
lighting optics

SPRINGS

Standard with CS spring (concrete/gyproc). Also available as above with WS spring (gyproc/metal).



COLOURS

Available colour:



Matt white RAL 9016 (XX=MW)
Matt black RAL 9005 (XX=BL)

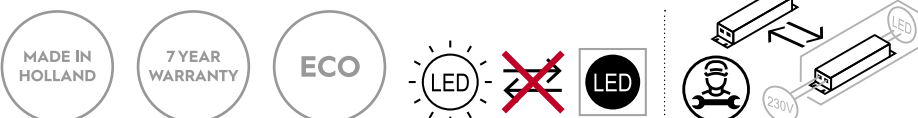
Fabio 35
Fixed

SPECIFICATIONS

Beam angle (FWHM)	40° (65° FWTM)
Fixture material	Housing: Die cast aluminium / Reflector glass: Polycarbonate
Environment	Indoor
IK rate	IK03
Operating temperature (Ta)	-20°C / +45°C ¹
Safety marks	EN60598 / EN62031 / EN62471
EMC compliance	EN55015
Colour consistency (SDCM)	MacAdam step 3
Warranty	7 years * (within the European Union and the countries of the Free Trade Association for products delivered after 1 May 2015)
Energy class	These products contains a light source of energy efficiency class F (2700K/3000K) / E (4000K)

This luminaire contains built-in LED lamps. There are no exchangeable parts inside the luminaire. EU 874/2012

¹ In applications with a flat roof (fi. car showrooms) the temperatures may exceed 45°C. Please ask our sales office for a special driver.



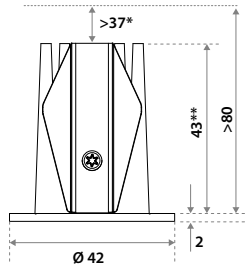
Only when the product is installed in a closed ceiling it may be exposed to water splashes, and only on its front side.



FABIO 35 VARIATIONS

Fabio 35 LV	100-240V	incl. power supply	page 3
Fabio 35 LV-C	350mA	to be connected to a central power supply	page 4

DIMENSIONS



* This distance is necessary because of the height of the connection box (80 mm). For purely heat reasons just 5 mm is sufficient.

** For WS springs this dimension is 60 mm

HOLE SIZE



Using CS springs: Ø 35x35 mm.
Thickness ceiling 5-80 mm
& recess depth 80 mm.

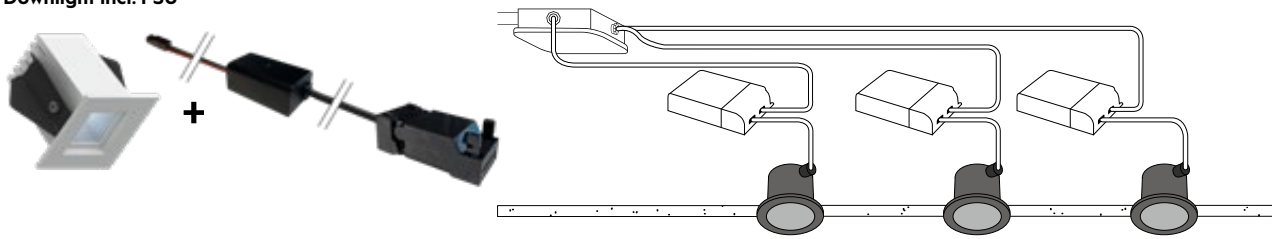


Using WS springs: Ø 36x36 mm.
Thickness ceiling 1-50 mm
& recess depth 80 mm.

FABIO 35 (non-dimmable - incl. individual power supply)

100-240V

Downlight incl. PSU



ITEM SPECIFICATIONS (PART A)

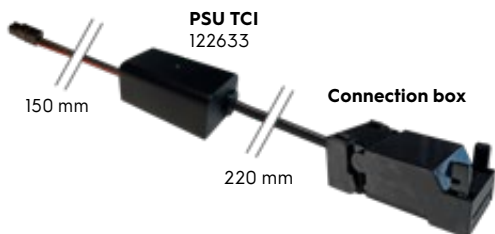
Description	Item code CS	Item code WS	Input	W	Lm	Lm/W	CRI (typ.)	UGR	Pf	Ripple	Inrush current	B-16A Fuse
Fabio 35 LV 375 Lm 2700K No dim	965303XX6513	965303XX6813	100-240V	5,7	375	66	82	10.7	0.6	<3%	20A 170µS	50 pcs
Fabio 35 LV 400 Lm 3000K No dim	965303XX6613	965303XX6913	100-240V	5,7	400	70	82	10.9	0.6	<3%	20A 170µS	50 pcs
Fabio 35 LV 425 Lm 4000K No dim	965303XX6713	965303XX7013	100-240V	5,7	425	75	82	11.1	0.6	<3%	20A 170µS	50 pcs

ITEM SPECIFICATIONS (PART B)

Description	Safety class	Energy class	Weight	Dimensions single carton	Quantity per carton	Expected lifespan B10 reported (25°C)		
						L70B10	L80B10	L90B10
Fabio 35 LV 375 Lm 2700K No dim	II	F	172 gr	105x105x61 mm	42 pcs	>60.000 hrs	>60.000 hrs	>60.000 hrs
Fabio 35 LV 400 Lm 3000K No dim	II	F	172 gr	105x105x61 mm	42 pcs	>60.000 hrs	>60.000 hrs	>60.000 hrs
Fabio 35 LV 425 Lm 4000K No dim	II	E	172 gr	105x105x61 mm	42 pcs	>60.000 hrs	>60.000 hrs	>60.000 hrs

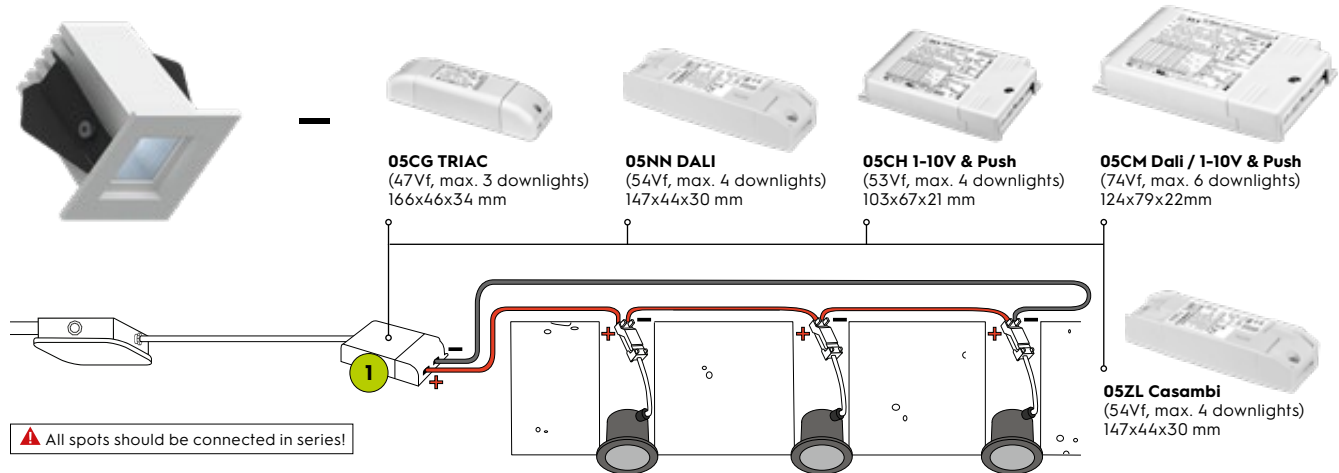
All values are measured at 230V (+/- 7%)

INCL. PSU NO DIM



FABIO 35 (dimnable - excl. central power supply)

350 mA



ITEM SPECIFICATIONS (PART A)

Description	Item code CS	Item code WS	Input	Vf	W	Lm	Lm/W	CRI (typ.)	UGR	Pf	Ripple	Inrush current	B-16A Fuse
Fabio 35 LV-C 350mA 375 Lm 2700K Dim	965303XX0111	965303XX1A11	350mA	11,9	4,5	375	83	82	10.7	x	x	x	x
Fabio 35 LV-C 350mA 400 Lm 3000K Dim	965303XX7211	965303XX2A11	350mA	11,9	4,5	400	89	82	10.9	x	x	x	x
Fabio 35 LV-C 350mA 425 Lm 4000K Dim	965303XX0211	965303XX3A11	350mA	11,9	4,5	425	94	82	11.1	x	x	x	x

ITEM SPECIFICATIONS (PART B)

Description	Safety class	Energy class	Weight	Dimensions single carton	Quantity per carton	Expected lifespan B10 reported (25°C)		
						L70B10	L80B10	L90B10
Fabio 35 LV-C 350mA 375 Lm 2700K Dim	III	F	122 gr	105x105x61 mm	42 pcs	>60.000 hrs	>60.000 hrs	>60.000 hrs
Fabio 35 LV-C 350mA 400 Lm 3000K Dim	III	F	122 gr	105x105x61 mm	42 pcs	>60.000 hrs	>60.000 hrs	>60.000 hrs
Fabio 35 LV-C 350mA 425 Lm 4000K Dim	III	E	122 gr	105x105x61 mm	42 pcs	>60.000 hrs	>60.000 hrs	>60.000 hrs

ITEM SPECIFICATIONS (PART A)

Description	Item code	Input	Watt	Current	Efficiency	Pf	Ripple	Weight	Inrush current	B-16A Fuse
PSU 17W 350mA Triac (I)	05CG03MLMD00	220-240V	17W (47Vf)	350mA	85%	0.97	<3%	138 gr	5A 50µS	50 pcs
PSU 18W 350mA Dali (I)	05NN03MLMD00	220-240V	18W (54Vf)	350mA	90%	0.95	<3%	138 gr	5A 50µS	50 pcs
PSU 18W 350mA 1-10V & Push (I)	05CH03MLMD00	220-240V	18W (53Vf)	350mA	90%	0.95	<3%	138 gr	5A 50µS	50 pcs
PSU 18,5W 350mA Casambi (I)	05ZL03MLMD00	220-240V	18,5W (54Vf)	350mA	90%	0.95	<3%	139 gr	5A 50µS	50 pcs
PSU 25W 350mA Dali / 1-10V & Push (I)	05CM03MLMD00	220-240V	25W (74Vf)	350mA	89%	0.95	<3%	218 gr	20A 400µS	50 pcs

All values are measured at 230V (+/- 7%)

INCLUDING CONNECTION BOX

For installation to a central power supply.

