



WEVER & DUCRÉ
LIGHTING

PALOS WALL 2.0

4162A4A4

Project

Type

Notes

Quantity

Date

GENERAL

Wall

Surface

Anthracite Grey

RAL 7016 ^a

IP65

Exterior

1240 lm

LED

3000 K

CRI \geq 80

L80 / 50000 h

3-step binning

OPTICAL

Wide Flood

ELECTRICAL

phase-cut dim

220 - 240 V

Total connected power 21.0 W

Class 1

Safety distance 0.3 m

PHYSICAL

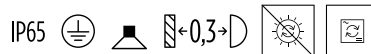
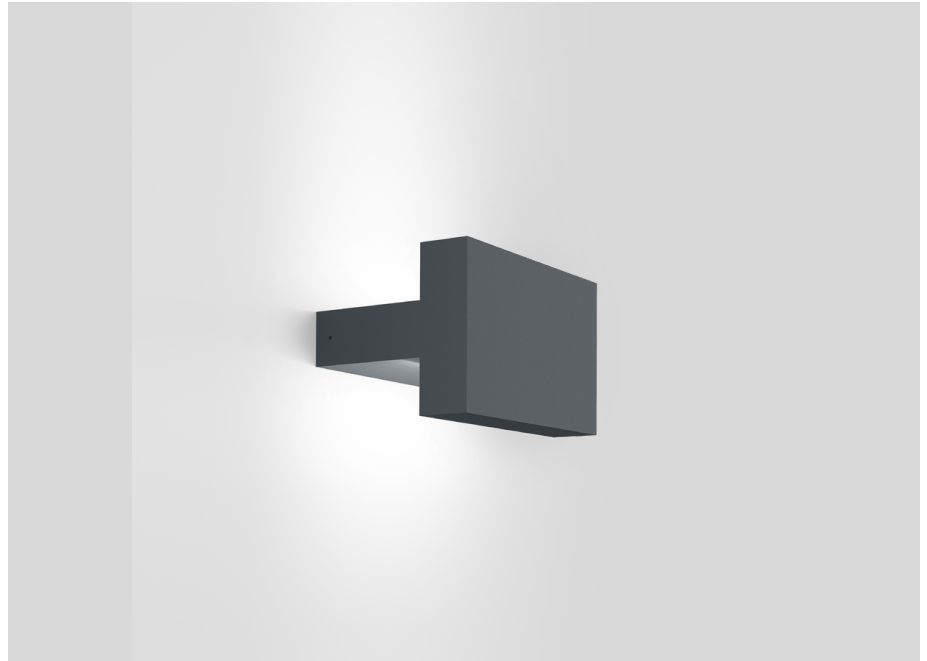
Length 130 mm

Width 100 mm

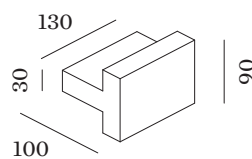
Height 90 mm

1.1 kg

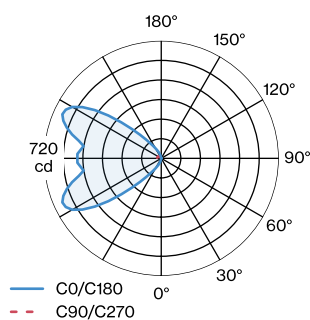
^a Color may deviate slightly due to production conditions.



Wall surface luminaire made from aluminium; surface Anthracite Grey; powder coated; matt texture; RAL 7016; direct/indirect light distribution; PCB 3-step binning; phase-cut dim; light colour 3000 K; binning initial MacAdam \leq 3 SDCM; CRI \geq 80; 220 - 240 V; degree of protection IP65; PC1; driver included; light source not replaceable; control gear replaceable by end-user;



LIGHT DISTRIBUTION





WEVER & DUCRÉ
LIGHTING

PALOS WALL 2.0

4162A4A4

Maintenance Factors

Operating Time [h]	10 000	20 000	30 000	40 000	50 000
LLMF	0.97	0.93	0.89	0.86	0.82
LSF	1	1	1	1	1

MF	$LMF \times RSMF \times LLMF \times LSF$	RSMF ^a	Room Surface Maintenance Factor
MF	Maintenance Factor	LLMF	Lamp Lumens Maintenance Factor
LMF ^a	Luminaire Maintenance Factor	LSF	Lamp Survival Faktor

^a According to "CIE 97, Maintenance of indoor electric lighting systems", 2005, ISBN 3-900-734-34-8. The values must be determined by the planner.