



**WEVER & DUCRÉ**  
LIGHTING

# PLANO 1.0 PAR16

118120S0

Project	.....
Type	.....
Notes	.....
Quantity	.....
Date	.....

## GENERAL

Ceiling	.....
Recessed	.....
White Aluminium	.....
IP20	.....
Interior	.....
470 lm	.....
RAL 9006 <sup>a</sup>	.....

## LED

Lamp PAR16	.....
PAR16	.....
Socket GU10	.....
max. 12 W	.....
CRI $\geq$ 90	.....

## OPTICAL

Wide Flood	.....
Beam angle 48°	.....

## PHYSICAL

Length 85 mm	.....
Width 85 mm	.....
Height 115 mm	.....
0.24 kg	.....
Tilt min 35°	.....
Tilt max 35°	.....
Rotation 355°	.....

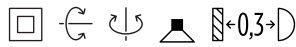
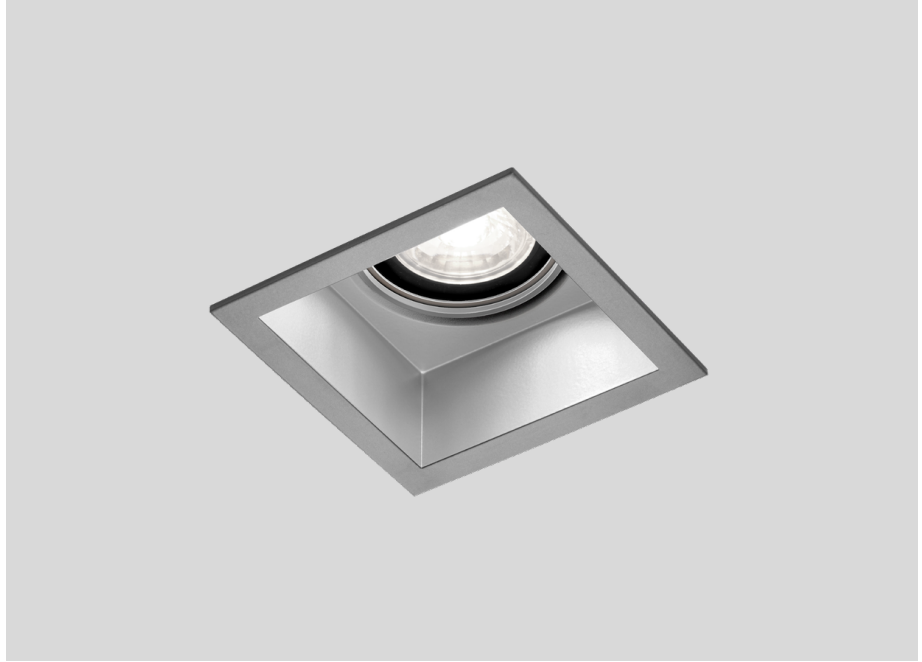
## ELECTRICAL

100 - 240 V	.....
LED Inset 6.5 W	.....
Class 2	.....
Safety distance 0.3 m	.....

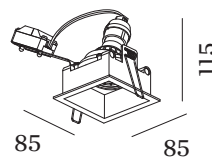
## CUTOUT

Length 74 mm	.....
Width 78 mm	.....
Min. ceiling thickness 2 mm	.....
Max. ceiling thickness 18 mm	.....
Recessed depth 120 mm	.....

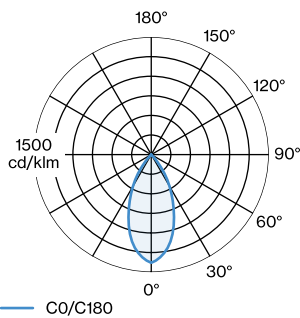
<sup>a</sup> Color may deviate slightly due to production conditions.



Squared ceiling recessed downlight made from die-cast aluminium; adjustable; surface White Aluminium; wet painted; matt smooth; RAL 9006; installation without tools using wire springs; suitable for ceiling thickness of 2-18 mm; recessed depth 120 mm; lamp socket GU10; lamp type PAR16; max. 12W; 100 - 240 V; 355° rotatable and 35° tiltable; degree of protection IP20; PC2; lamp not included;



## LIGHT DISTRIBUTION



[118120S0] The technical data represent rated values for an ambient temperature of 25°C. The data values for the luminous flux are initially subject to a tolerance of +/- 10%, those for the electrical connected load are initially subject to a tolerance of +/- 10%, and those for the colour temperature are initially subject to a tolerance of +/- 150 K. No liability is assumed for typographical or printing errors. The general terms and conditions of Wever & Ducré BV apply.  
© Wever & Ducré BV · Spinnerijstraat 99/21 · 8500 Kortrijk · Belgium · www.weverducre.com



WEVER & DUCRÉ  
LIGHTING

# PLANO 1.0 PAR16

118120S0

## CONE DIAGRAM

wide flood 48°

h (m)	EO° (lx)	ø (m)
1	699	0.89
2	175	1.78
3	78	2.66
4	44	3.55
5	28	4.44

## MOUNTING

### Plasterkit

TYPE	L-H (MM)	ORDERCODE
PLANO 1.0	180-180	9 0 0 1 7 1 0 4

## OTHER

### Metal spring clip

TYPE	(MM)	ORDERCODE
MR16   LED   PAR16   max. 12W	59	9 0 0 1 9 7 0 0



ø59

### Spring clip

TYPE	COLOUR	(MM)	ORDERCODE
MR16   LED   PAR16   max. 12W	Black	59	9 0 0 1 9 8 B 0
MR16   LED   PAR16   max. 12W	Gold	59	9 0 0 1 9 8 G 0
MR16   LED   PAR16   max. 12W	Bronze	59	9 0 0 1 9 8 Q 0
MR16   LED   PAR16   max. 12W	Silver	59	9 0 0 1 9 8 S 0
MR16   LED   PAR16   max. 12W	White	59	9 0 0 1 9 8 W 0

## LAMPS

### PAR16 LED Lamp

TYPE	COLOUR	Ø-H (MM)	ORDERCODE
2700K   >90 CRI   GU10	Black	ø50-58	9 0 1 2 2 8 B 3
3000K   >90 CRI   GU10	Black	ø50-58	9 0 1 2 2 8 B 5
2700K   >90 CRI   GU10	White	ø50-58	9 0 1 2 2 8 W 3
3000K   >90 CRI   GU10	White	ø50-58	9 0 1 2 2 8 W 5
2700K   >80 CRI   GU10	Silver	ø50-52	9 0 5 2 2 7 S 2
3000K   >80 CRI   GU10	Silver	ø50-52	9 0 5 2 2 7 S 4