



WEVER & DUCRÉ
LIGHTING

PLANO 1.0 LED

118161S5

GENERAL

Ceiling

Recessed

Tilt min 35°

Tilt max 35°

Rotation 355°

White Aluminium

RAL 9006 ^a

IP20

Interior

520^b to 695° lm

LED

3000 K

CRI ≥ 90

L80 B50 / 50000h

2-step binning

OPTICAL

Flood

Beam angle 35°

ELECTRICAL

excl. power supply

18 V

LED Inset 5.9^b to 8.7° W

350 to 500 mA

Class 3

Safety distance 0.3 m

PHYSICAL

Length 85 mm

Width 85 mm

Height 90 mm

0.26 kg

CUTOUT

Length 74 mm

Width 78 mm

Min. ceiling thickness 2 mm

Max. ceiling thickness 18 mm

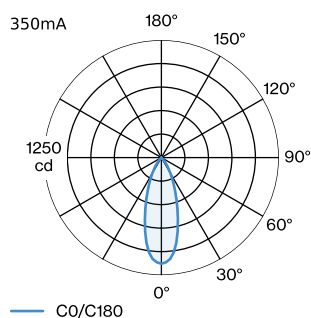
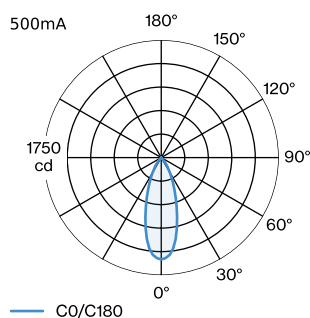
Recessed depth 95 mm

^a Color may deviate slightly due to production conditions.

^b 350mA

^c 500mA

LIGHT DISTRIBUTION



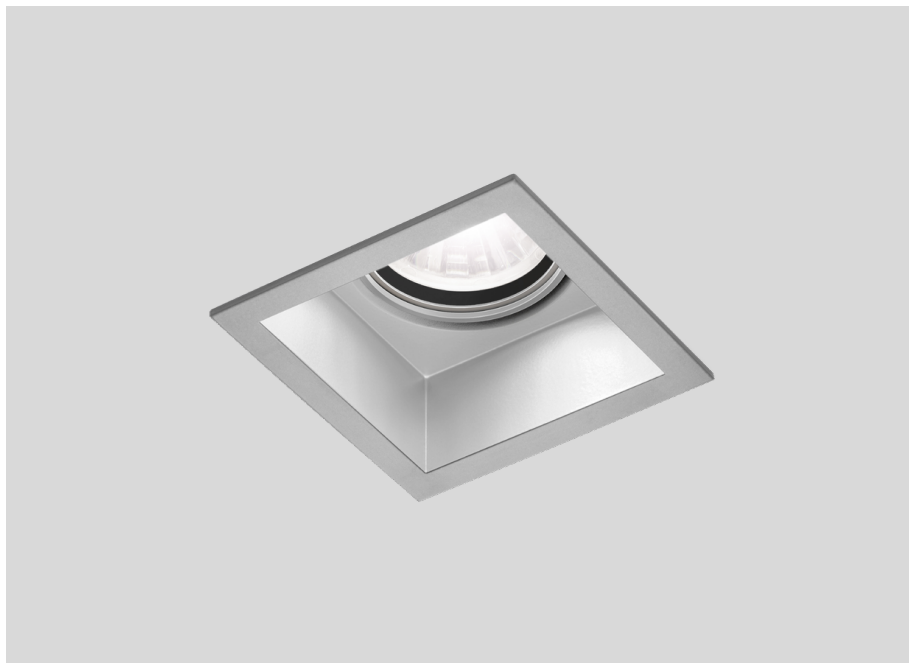
Project

Type

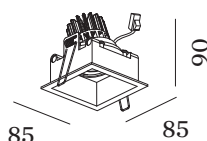
Notes

Quantity

Date



Squared ceiling recessed downlight made from die-cast aluminium; adjustable; surface White Aluminium; wet painted; matt smooth; RAL 9006; installation without tools using wire springs; suitable for ceiling thickness of 2-18 mm; recessed depth 95 mm; with COB (Chip on Board) technology for maximum efficiency; light colour 3000 K; binning initial MacAdam 2 SDCM; CRI 90; beam angle 35°; 355° rotatable and 35° tiltable; degree of protection IP20; PC3; driver not included; light source replaceable by an authorized professional;





WEVER & DUCRÉ
LIGHTING

PLANO 1.0 LED

118161S5

CONE DIAGRAM

flood 35° 500mA			flood 35° 350mA		
h (m)	EO° (lx)	ø (m)	h (m)	EO° (lx)	ø (m)
1	1520	0.63	1	1130	0.63
2	380	1.27	2	280	1.27
3	170	1.90	3	130	1.90
4	90	2.53	4	70	2.53
5	60	3.16	5	50	3.16

Maintenance Factors

Operating Time [h]	10 000	20 000	30 000	40 000	50 000
LLMF	0.96	0.92	0.88	0.85	0.81
LSF	1	1	1	1	1

MF	LMF × RSMF × LLMF × LSF	RSMF ^a	Room Surface Maintenance Factor
MF	Maintenance Factor	LLMF	Lamp Lumens Maintenance Factor
LMF ^a	Luminaire Maintenance Factor	LSF	Lamp Survival Faktor

^a According to "CIE 97, Maintenance of indoor electric lighting systems", 2005, ISBN 3-900-734-34-8. The values must be determined by the planner.

MOUNTING

Plasterkit

TYPE	L-H (MM)	ORDERCODE
PLANO 1.0	180-180	9 0 0 1 7 1 0 4

OTHER

Metal spring clip

TYPE	(MM)	ORDERCODE
MR16 LED PAR16 max. 12W	59	9 0 0 1 9 7 0 0



Spring clip

TYPE	COLOUR	(MM)	ORDERCODE
MR16 LED PAR16 max. 12W	Black	59	9 0 0 1 9 8 B 0
MR16 LED PAR16 max. 12W	Gold	59	9 0 0 1 9 8 G 0
MR16 LED PAR16 max. 12W	Bronze	59	9 0 0 1 9 8 Q 0
MR16 LED PAR16 max. 12W	Silver	59	9 0 0 1 9 8 S 0
MR16 LED PAR16 max. 12W	White	59	9 0 0 1 9 8 W 0



WEVER & DUCRÉ
LIGHTING

PLANO 1.0 LED

118161S5

ELECTRICAL

Driver

TYPE	L · W · H (MM)	ORDERCODE
10W 500mA 11-20V	100-43-23	9 0 2 1 4 4 0 5
10W 500mA 3-20V	102-49-29	9 0 2 2 4 4 0 2
17W 350mA 10-49V	108-52-22	9 0 2 4 3 6 0 1
20W 500mA 9-45V	116-40.5-22	9 0 2 4 4 6 0 4