



**WEVER & DUCRÉ**  
LIGHTING

# PLANO

## IP44 1.0 PAR16

118420B0

Project	.....
Type	.....
Notes	.....
Quantity	.....
Date	.....

### GENERAL

Ceiling	.....
Recessed	.....
Jet Black	.....
IP44	.....
Interior	.....
420 lm	.....
RAL 9005 <sup>a</sup>	.....

### LED

Lamp PAR16	.....
PAR16	.....
Socket GU10	.....
max. 12 W	.....
CRI $\geq$ 90	.....

### OPTICAL

Flood	.....
Beam angle 48°	.....

### PHYSICAL

Length 85 mm	.....
Width 85 mm	.....
Height 115 mm	.....
0.19 kg	.....

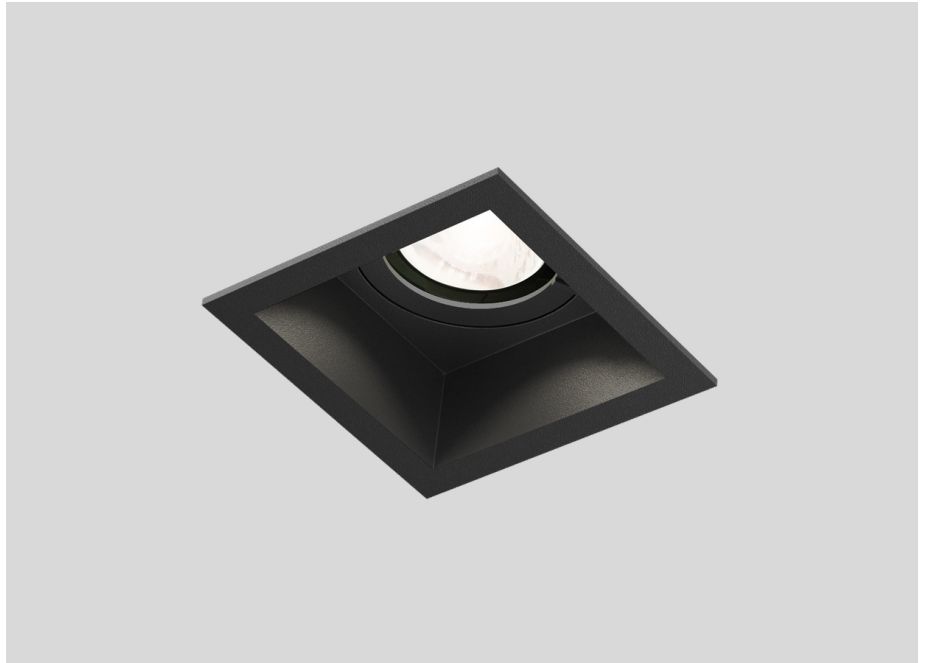
### ELECTRICAL

100 - 240 V	.....
LED Inset 6.5 W	.....
Class 2	.....
Safety distance 0.3 m	.....

### CUTOUT

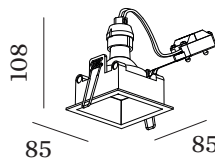
Length 74 mm	.....
Width 78 mm	.....
Min. ceiling thickness 4 mm	.....
Max. ceiling thickness 30 mm	.....
Recessed depth 115 mm	.....

<sup>a</sup> Color may deviate slightly due to production conditions.

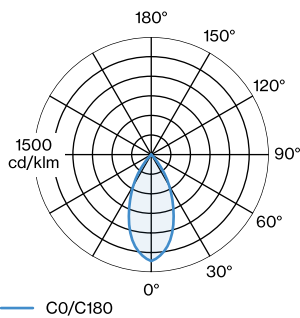


IP44  $\pm 0,3$

Squared ceiling recessed downlight made from die-cast aluminium; surface Jet Black; powder coated; matt texture; RAL 9005; installation without tools using wire springs; suitable for ceiling thickness of 4-30 mm; recessed depth 115 mm; lamp socket GU10; lamp type PAR16; max. 12W; 100 - 240 V; degree of protection from below IP44; from above IP20; PC2; lamp not included;



### LIGHT DISTRIBUTION



[118420B0] The technical data represent rated values for an ambient temperature of 25°C. The data values for the luminous flux are initially subject to a tolerance of +/- 10%, those for the electrical connected load are initially subject to a tolerance of +/- 10%, and those for the colour temperature are initially subject to a tolerance of +/- 150 K. No liability is assumed for typographical or printing errors. The general terms and conditions of Wever & Ducré BV apply.  
© Wever & Ducré BV · Spinnerijstraat 99/21 · 8500 Kortrijk · Belgium · www.weverducre.com



WEVER & DUCRÉ  
LIGHTING

# PLANO

## IP44 1.0 PAR16

118420B0

### CONE DIAGRAM

flood 48°

h (m)	EO° (lx)	ø (m)
1	625	0.89
2	156	1.78
3	69	2.66
4	39	3.55
5	25	4.44

### LAMPS

#### PAR16 LED Lamp

TYPE	COLOUR	Ø · H (MM)	ORDERCODE
2700K   >90 CRI   GU10	Black	ø50-58	9 0 1 2 2 8 B 3
3000K   >90 CRI   GU10	Black	ø50-58	9 0 1 2 2 8 B 5
2700K   >90 CRI   GU10	White	ø50-58	9 0 1 2 2 8 W 3
3000K   >90 CRI   GU10	White	ø50-58	9 0 1 2 2 8 W 5
2700K   >80 CRI   GU10	Silver	ø50-52	9 0 5 2 2 7 S 2
3000K   >80 CRI   GU10	Silver	ø50-52	9 0 5 2 2 7 S 4