



WEVER & DUCRÉ
LIGHTING

SNEAK TRIM 1.0 LED

155351K5

Project

Type

Notes

Quantity

Date

GENERAL

Ceiling

Recessed

Tilt min 35°

Tilt max 35°

Rotation 355°

Jet Black + Gold

RAL 9005^a

IP20

Interior

375^b to 505^c lm

LED

3000 K

CRI ≥ 90

L80 B50 / 50000h

2-step binning

OPTICAL

Downlight

Beam angle 28°

ELECTRICAL

excl. power supply

18 V

LED Inset 5.9^b to 8.7° W

350 to 500 mA

Class 3

Safety distance 0.3 m

PHYSICAL

Length 85 mm

Width 85 mm

Height 90 mm

0.19 kg

CUTOUT

Length 74 mm

Width 78 mm

Min. ceiling thickness 2 mm

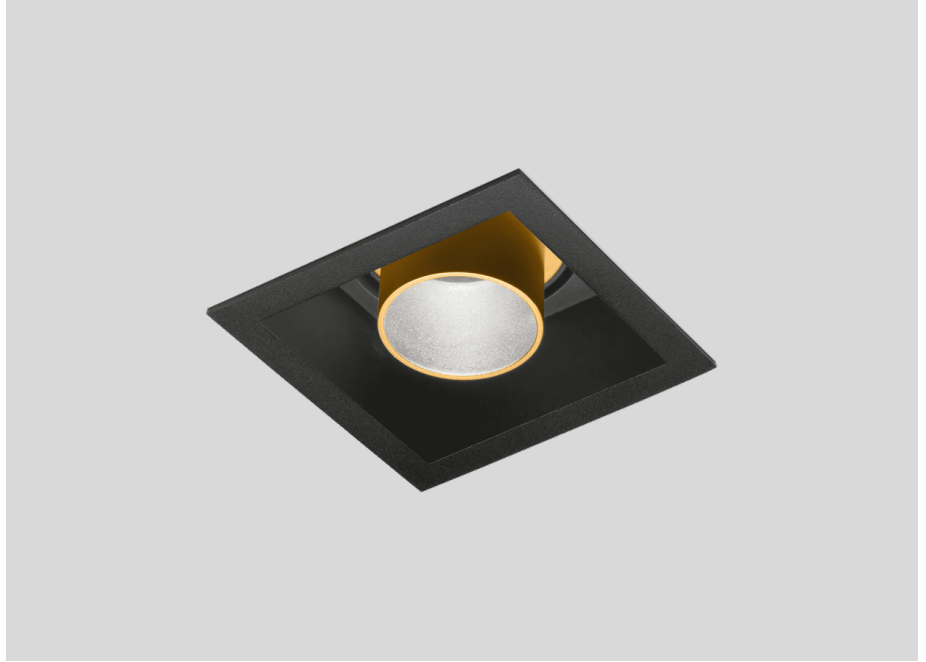
Max. ceiling thickness 18 mm

Recessed depth 95 mm

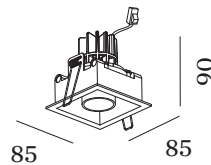
^a Color may deviate slightly due to production conditions.

^b 350mA

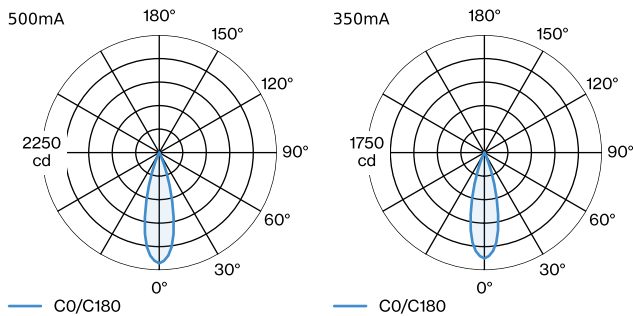
^c 500mA



Squared ceiling recessed luminaire made from aluminium; surface Jet Black + Gold; wet painted; matt smooth; RAL 9005; suitable for ceiling thickness of 2-18 mm; recessed depth 95 mm; with COB (Chip on Board) technology for maximum efficiency; light colour 3000 K; binning initial MacAdam 2 SDCM; CRI 90; beam angle 28°; 355° rotatable and 35° tiltable; degree of protection IP20; PC3; driver not included; light source replaceable by an authorized professional;



LIGHT DISTRIBUTION



[155351K5] The technical data represent rated values for an ambient temperature of 25°C. The data values for the luminous flux are initially subject to a tolerance of +/- 10%, those for the electrical connected load are initially subject to a tolerance of +/- 10%, and those for the colour temperature are initially subject to a tolerance of +/- 150 K. No liability is assumed for typographical or printing errors. The general terms and conditions of Wever & Ducré BV apply.
© Wever & Ducré BV · Spinnerijstraat 99/21 · 8500 Kortrijk · Belgium · www.weverducre.com



WEVER & DUCRÉ
LIGHTING

SNEAK TRIM 1.0 LED

155351K5

CONE DIAGRAM

downlight 28° 500mA

h (m)	EO° (lx)	ø (m)
1	2120	0.50
2	530	1.01
3	240	1.51
4	130	2.02
5	80	2.52

downlight 28° 350mA

h (m)	EO° (lx)	ø (m)
1	1580	0.50
2	390	1.01
3	180	1.51
4	100	2.02
5	60	2.52

Maintenance Factors

Operating Time [h]	10 000	20 000	30 000	40 000	50 000
LLMF	0.96	0.92	0.88	0.85	0.81
LSF	1	1	1	1	1

MF	LMF × RSMF × LLMF × LSF	RSMF ^a	Room Surface Maintenance Factor
MF	Maintenance Factor	LLMF	Lamp Lumens Maintenance Factor
LMF ^a	Luminaire Maintenance Factor	LSF	Lamp Survival Faktor

^a According to "CIE 97, Maintenance of indoor electric lighting systems", 2005, ISBN 3-900-734-34-8. The values must be determined by the planner.

ELECTRICAL

Driver

TYPE	L · W · H (MM)	ORDERCODE
10W 500mA 11-20V	100-43-23	9 0 2 1 4 4 0 5
10W 500mA 3-20V	102-49-29	9 0 2 2 4 4 0 2
17W 350mA 10-49V	108-52-22	9 0 2 4 3 6 0 1
20W 500mA 9-45V	116-40.5-22	9 0 2 4 4 6 0 4