



WEVER & DUCRÉ
LIGHTING

SQUBE

on base 3.0 PAR16

144620W0

Project

Type

Notes

Quantity

Date

GENERAL

Ceiling , Surface

Tilt max 90°

Rotation 355°

White Matt

RAL 9010^a

IP20

Interior

Output: 1520^b, 1640°^c lm

CIE flux code: 94 98 100 100 100

LED

Lamp 3 x PAR16

Socket GU10

max. per socket 12.0 W

CRI ≥ 90

ELECTRICAL

100 - 240 V

LED Inset 6.5 W

Total insets 19.5 W

Class 1

PHYSICAL

Length 357 mm

Width 55 mm

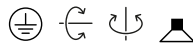
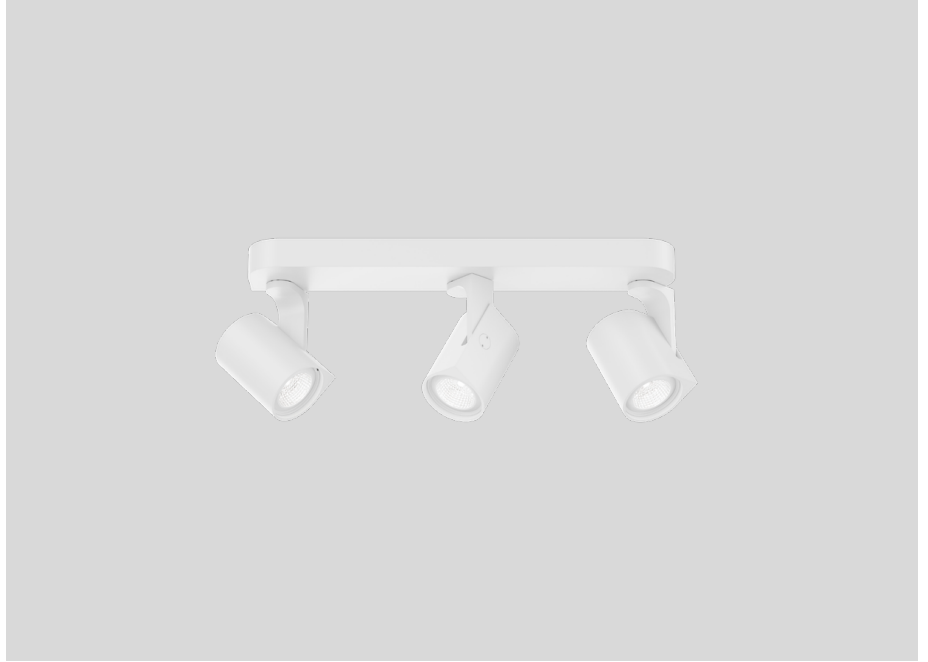
Height 77 mm

0.93 kg

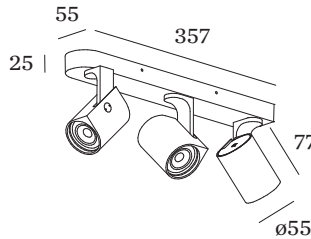
^a Color may deviate slightly due to production conditions.

^b PAR16 LAMP 2700K CRI90

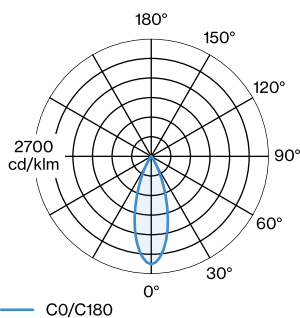
^c PAR16 LAMP 3000K CRI90



Ceiling surface spotlight made from die-cast aluminium; surface White Matt; powder coated, matt texture; RAL 9010; lamp socket GU10; lamp type PAR16; max. 12W; 100 - 240 V; 355° rotatable and 90° tiltable; degree of protection IP20; PCI; lamp not included;



LIGHT DISTRIBUTION



[144620W0] The technical data represent rated values for an ambient temperature of 25°C. The data values for the luminous flux are initially subject to a tolerance of +/- 10%, those for the electrical connected load are initially subject to a tolerance of +/- 10%, and those for the colour temperature are initially subject to a tolerance of +/- 150 K. No liability is assumed for typographical or printing errors. The general terms and conditions of Wever & Ducré apply.
© Wever & Ducré BV · Spinnerijstraat 99/21 · 8500 Kortrijk · Belgium · www.weverducre.com



WEVER & DUCRÉ
LIGHTING

SQUBE

on base 3.0 PAR16

144620W0

LAMPS

PAR16 LED Lamp

TYPE	COLOUR	Ø · H (MM)	ORDERCODE
2700K >90 CRI GU10	Black	∅50 · 60	9 0 1 2 2 8 B 3
3000K >90 CRI GU10	Black	∅50 · 60	9 0 1 2 2 8 B 5
2700K >90 CRI GU10	White	∅50 · 60	9 0 1 2 2 8 W 3
3000K >90 CRI GU10	White	∅50 · 60	9 0 1 2 2 8 W 5
2700K >80 CRI GU10	Silver	∅50 · 60	9 0 5 2 2 7 S 2
3000K >80 CRI GU10	Silver	∅50 · 60	9 0 5 2 2 7 S 4