

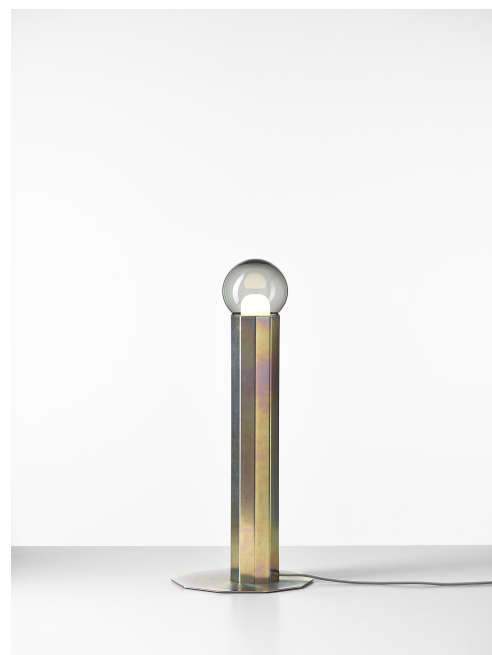


Description

The dominant feature of the Prisma collection is an extravagant metal fixture with a distinctive finish. Classic handblown glass spheres are anchored to either one or both ends of a robust decagonal metal prism that lends the collection its name. The shape in combination with the striking surface reflect light at different and unexpected angles, like a prism. With a choice of three different elegant finishes – brushed steel, galvanized yellow zinc gloss, or galvanized yellow zinc matte – the light is a bold artistic object in the interior offering unique vertical, horizontal, and diagonal compositions with subtle colourful reflections. The collection consists of a horizontal pendent light with two dual glass spheres and a vertical pendent light with a single glass sphere, both of which hang from wire ropes. Another typological variant is an impressive floor light, a majestic light sculpture in the form of a robust upright decagon topped with a luminous glass sphere.

Tech. description

The light comprises a metal fixture with base, an LED module, triplex opal glass diffuser, and glass shade. The shade is fitted with a braided textile power cord.

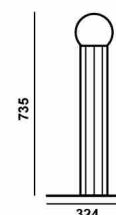


Available colour options: <https://mbapi.cz/red/pis/eu/en/pc1316>

CONSTRUCTION SPECIFICATION

Weight:	6.5 kg
Construction material:	glass, metal
Cord length [mm]:	2,200 mm
Mounting:	Floor
Environment:	Indoor

DIMENSIONS [mm]

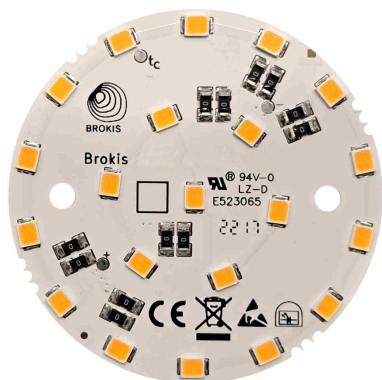


ELECTRICAL SPECIFICATION

Input voltage [V]:	100 - 240 V
Frequency [Hz]:	50-60 Hz
Max. power [W]:	8.1 W
Coverage IP:	20
Socket:	LED module
Light source:	-
Energy class:	E

CERTIFICATIONS





CM15959 LED MODUL_D50_RA90_
PRISMA FLOOR_CV max. 6,7W/
350mA 2700K DNA, RA90

Type	LED module
Lamp wattage [W]	6.7 W
Input current [mA]	350 mA
Energy class	E
Flux [lm]	939 lm
Light colour [K]	2700 K
CRI	90
Dimmable	yes

