



Description

Puro Contour are luminescent geometric patterns in space primarily intended for hanging above tables; however, thanks to their abstract character, they aspire to a variety of uses in interiors and projects. The Puro collection comes in matt opal white or smoke grey glass.

Tech. description

The Puro Contour collection is a luminaire consisting of three, four, five or six glass tubes arranged in geometric shapes. The tubes are suspended from a ceiling canopy in which the electronics are located. Each of the tubes is hung on a cable and a steel wire. There is an integrated magnet in the sockets that keeps the tube assembly in the desired position.

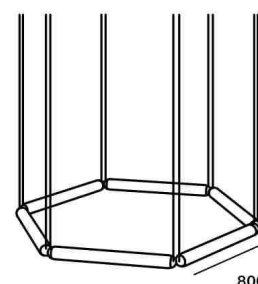


Colours options: https://brokis.sharepoint.com/:b:/s/brokis_sp/ERXI36CZPdRHjrLOYw4T4LABQ6nAJWq3KtEwoK-7kSTVSg

CONSTRUCTION SPECIFICATION

Weight: 37 kg
Construction material: glass, metal
Cord length [mm]: 2,000 mm
Mounting: Ceiling
Environment: Indoor

DIMENSIONS [mm]

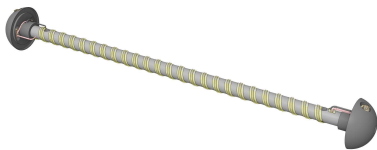


ELECTRICAL SPECIFICATION

Input voltage [V]: 100 - 240 V
Frequency [Hz]: 50-60 Hz
Max. power [W]: 108 W LED
Coverage IP: 20
Socket: -
Light source: non-user replaceable LED module
Energy class: E

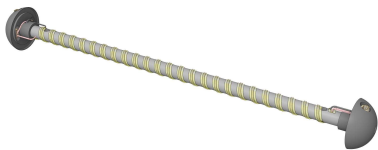
CERTIFICATIONS





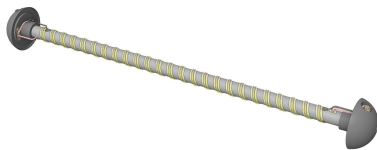
CP8285

Type	LED module
Lamp wattage [W]	18 W
Input voltage [V]	24 VDC
Energy class	E
Flux [lm]	1495 lm
Light colour [K]	2700 K
CRI	80+
Lifespan [h]	20000h
Dimmable	yes (PWM)



CP8287

Type	LED module
Lamp wattage [W]	18 W
Input voltage [V]	24 VDC
Energy class	E
Flux [lm]	1656 lm
Light colour [K]	4000 K
CRI	80+
Lifespan [h]	20000h
Dimmable	yes (PWM)



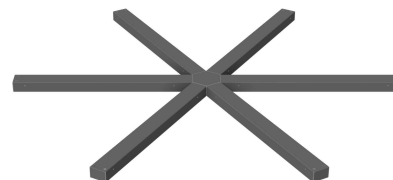
CP8289

Type	LED module
Lamp wattage [W]	18 W
Input voltage [V]	24 VDC
Energy class	E
Flux [lm]	1771 lm
Light colour [K]	5000 K
CRI	80+
Lifespan [h]	20000h
Dimmable	yes (PWM)

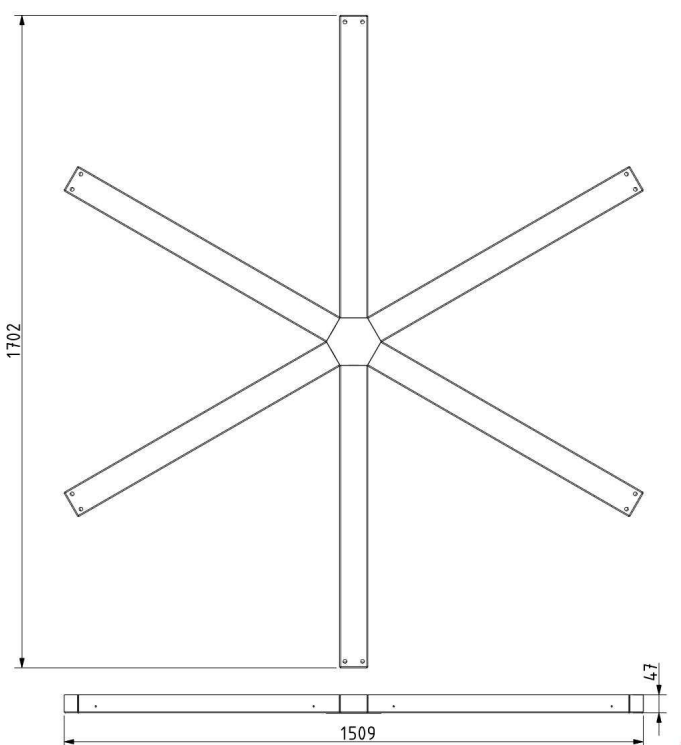


INNER FIXTURE

Dimensions l x w x h [mm] 1702 x 1509 x 47 mm
Weight [kg] 19.3 kg
Material metal



Drawing



Hole placement

