



Description These stars project a subtly different optical effect depending on the viewing angle, appearing to variably wax and wane or come to rest in a state of symmetry. Suspended on slender coaxial cables of varying lengths, the delicate handblown glass shades are available in three variants: opaque opaline, pearl pink opaline, and pearl grey opaline.

Tech. description The light comprises a dural fixture with integrated LED module, a diffusor crafted from light-conducting material, and a glass shade. The light is suspended on a coaxial cable from a metal ceiling canopy.



Available colour options: <https://mbapi.cz/red/pis/eu/en/pc1344>

CONSTRUCTION SPECIFICATION

Weight:1.9 kg

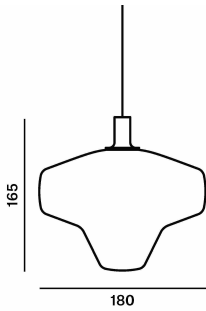
Construction material:glass, metal

Cord length [mm]:2,200 mm

Mounting:Ceiling

Environment:Indoor

DIMENSIONS [mm]



ELECTRICAL SPECIFICATION

Input voltage [V]:100 - 240 V

Frequency [Hz]:50-60 Hz

Max. power [W]:W

Coverage IP:20

Socket:-

Light source:LED module

Energy class:E

CERTIFICATIONS





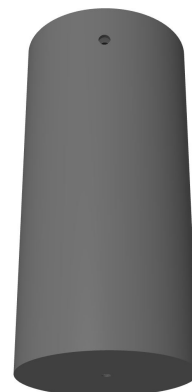
**CM17826 LED modul 2,5W 24VDC
without optic 2700K PCB5050 2.524
927**

Type	LED module
Lamp wattage [W]	2,5 W
Input voltage [V]	24 VDC
Energy class	E
Flux [lm]	250 lm
Light colour [K]	2700 K
CRI	90+
Dimmable	yes

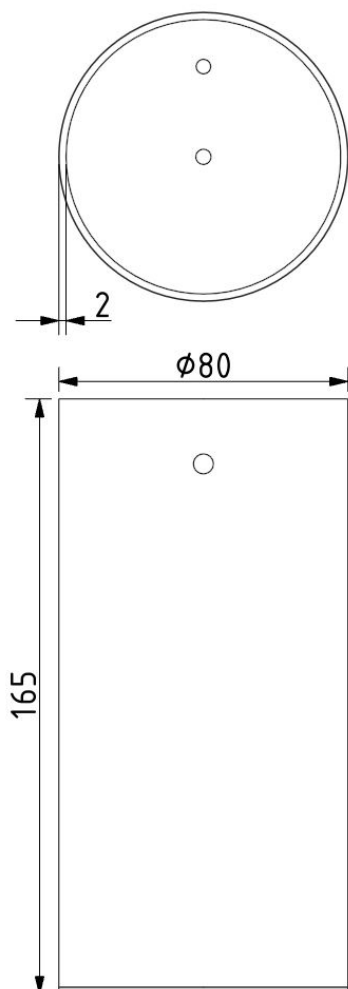


INNER FIXTURE

Dimensions O x w [mm]	80 X 165 mm
Weight [kg]	1 kg
Material	metal



Drawing



Hole placement

