



MACARON

CM12213

PC1038, PC1039, PC1040



Download

COMPONENTS INCLUDED WITH UNIT:

1x base (bottom section with power cable)
1x light source GX53
1x bottom and top glass sections
1x centre plate (stone/glass)
1x cotton gloves
1x installation manual

WARNING:

The manufacturer assumes no liability for damage resulting from incorrect assembly. When unpacking the light, do so with regard for its material composition – the main components are made of glass.

Wear the cotton gloves included with the light when unpacking and assembling it.

Instalation time: 10 minutes / 1 person



BROKIS®

BROKIS S.R.O.
ŠPANIELOVA 1315/25
163 00 PRAHA 6 - ŘEPY
CZECH REPUBLIC

ORG. ID 64940799
VAT ID CZ64940799
C 42174 MĚSTSKÝ SOUD
V PRAZE

TEL +420 567 211 517
TECHNICAL@BROKIS.CZ
INFO@BROKIS.CZ
WWW.BROKIS.CZ



CLEANING THE GLASS

BROKIS applies the highest possible quality standards in manufacturing its lights. Prior to shipping, each light undergoes several quality controls and stages of cleaning. Lights may require additional cleaning as a result of transportation, storage, and the amount of time that passes between packing in our plant and subsequent unpacking by the client. Therefore, we emphasize cleaning the lights prior to installation.

The glass must first be rinsed in hot water, with a dilution of a dish-detergent used to remove all foreign particles and dust. Eventually repeat this basic treatment, if necessary. Afterwards the glass must have a second cleaning using hot water, with a dilution of a de-greaser (such as ammonia or vinegar). The glass must then be thoroughly rinsed with running hot water. Eventually repeat this treatment, if necessary. The glass is then thoroughly dried with a paper towel or a clean soft cotton towel. Only re-assemble the glass to the lamp body, when completely cooled down.

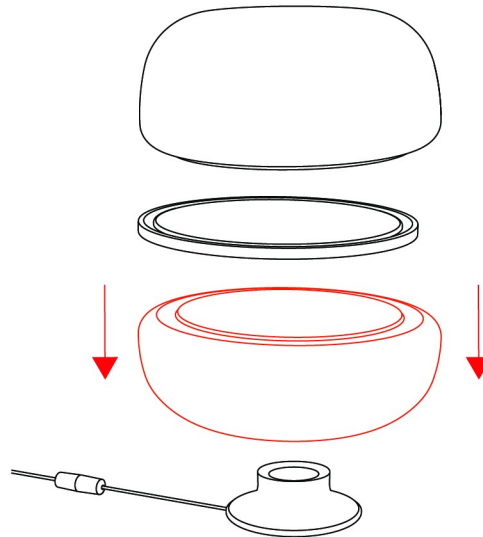
Do not use mineral spirits, highly concentrated thinners, or other substances not intended for use on glass surfaces. Also: do not use products, containing silicones – since they will rapidly attract more dust and grease.

PRIOR TO SHIPPING, THE FUNCTIONALITY OF EACH LIGHT AND ITS COMPONENTS IS THOROUGHLY TESTED. THE MANUFACTURER ASSUMES NO LIABILITY FOR THE MISHANDLING OF PRODUCTS.



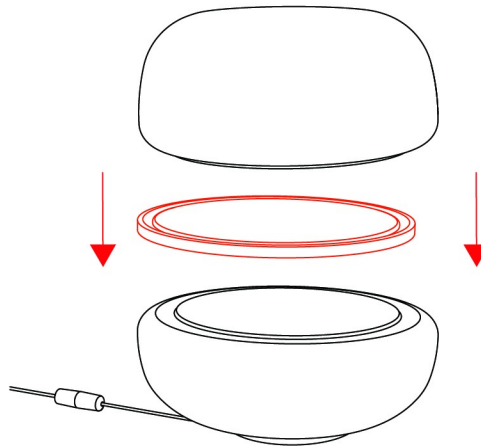
1. ASSEMBLING THE LIGHT 1/3

Install the GX53 light source in the base. Position the bottom glass section on the base. Ensure the glass is correctly aligned.



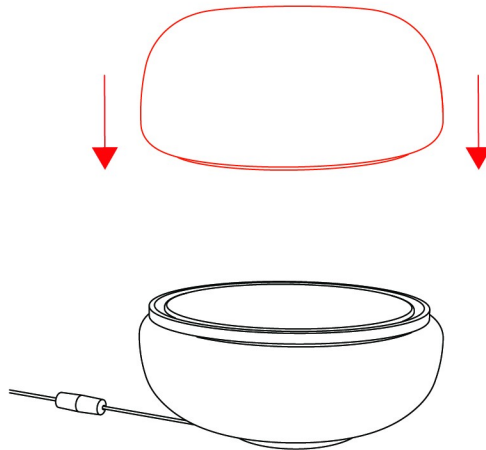
2. ASSEMBLING THE LIGHT 2/3

Carefully position the centre plate on the bottom glass section. The glass must fit precisely into the groove in the stone plate (smaller diameter groove).



3. ASSEMBLING THE LIGHT 3/3

Position the upper glass section on the light.



4. **SWITCHING ON THE LIGHT**

Plug the power cable into an electrical outlet and ensure the light works properly.

