



MUFFINS

CM13022

PC986



Download

COMPONENTS INCLUDED WITH UNIT:

- 1× ceiling bracket with canopy
- 1× light source (bulb)
- 3× hex screw M5×16
- 2× hex screw M4×12
- 2× hex keys, wire rope stop with ceiling anchor
- 3× terminal connectors
- 1× glass shade
- 1× wooden body
- 3× silicone rings
- 1× plastic cable stop
- 1× cotton gloves
- 1× installation manual

WARNING:

Installation must be carried out by a qualified electrician only!

Switch off power at main circuit panel prior to installation!

The manufacturer assumes no liability for damage occurring in transport or resulting from incorrect installation.

Installation time: 30 minutes / 2 persons



BROKIS®

BROKIS S.R.O.
ŠPANELOVA 1315/25
163 00 PRAHA 6 - ŘEPY
CZECH REPUBLIC

ORG. ID 64940799
VAT ID CZ64940799
C 42174 MĚSTSKÝ SOUD
V PRAZE

TEL +420 567 211 517
TECHNICAL@BROKIS.CZ
INFO@BROKIS.CZ
WWW.BROKIS.CZ



CLEANING THE GLASS

BROKIS upholds only the highest possible quality standards. Prior to shipping, the light undergoes several quality controls and stages of cleaning. Because transportation, storage, and the amount of time that passes between packing at our plant and subsequent unpacking by the client can affect the light in different ways, we strongly recommend cleaning it prior to assembly.

The glass must first be rinsed in warm water, and a dish detergent may be used to remove all foreign particles, dust, and grease. Repeat the process if necessary and then dry the glass thoroughly with a paper towel.

Recommendation: Do not use mineral spirits, highly concentrated thinners, or other substances not intended for use on glass surfaces. Do not use any cleaning agents containing silicone, as they may leave a film and attract dust and smudges.

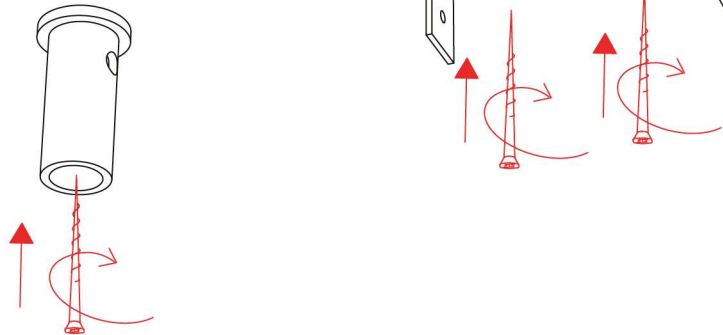
PRIOR TO SHIPPING, THE FUNCTIONALITY OF EACH LIGHT AND ITS COMPONENTS IS CHECKED THOROUGHLY. THE MANUFACTURER ASSUMES NO LIABILITY FOR THE MISHANDLING OF PRODUCTS.



1. INSTALLING THE CEILING BRACKET AND WIRE ROPE CEILING ANCHOR

Using fasteners of sufficient strength (not included), secure the bracket and wire rope anchor to the ceiling.

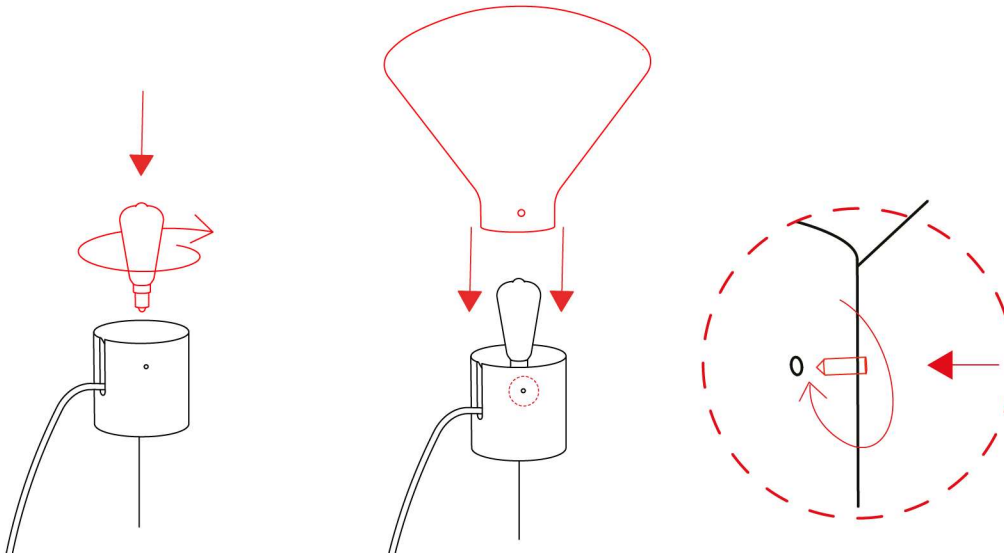
With regard to various types of ceilings, we recommend consulting installation with an expert. The manufacturer assumes no liability for incorrect installation, the use of improper fasteners, or defects in the material to which the load-bearing components are secured.



2. INSTALLING THE LIGHT SOURCE AND ASSEMBLING THE LIGHT

Install the light source in the fixture.

Insert 3 silicone bushings into the holes of the glass shade. Insert the glass shade into the wooden fixture so that the sticker with the logo located on the shade is opposite the hole for the cable in the wooden fixture. Simultaneously, adjust the holes for the adjusting screws in the wooden frame and on the glass shade so that they are opposite each other. Carefully tighten the 3 adjusting screws so that they are flush with the fixture surface. Failure to tighten the screws sufficiently may result in the glass shade falling out of the wooden body; on the other hand, sinking the screws beneath the surface of the wooden body will almost certainly result in damage to the glass shade. The manufacturer assumes no liability for damage resulting from incorrect installation of the set screws.

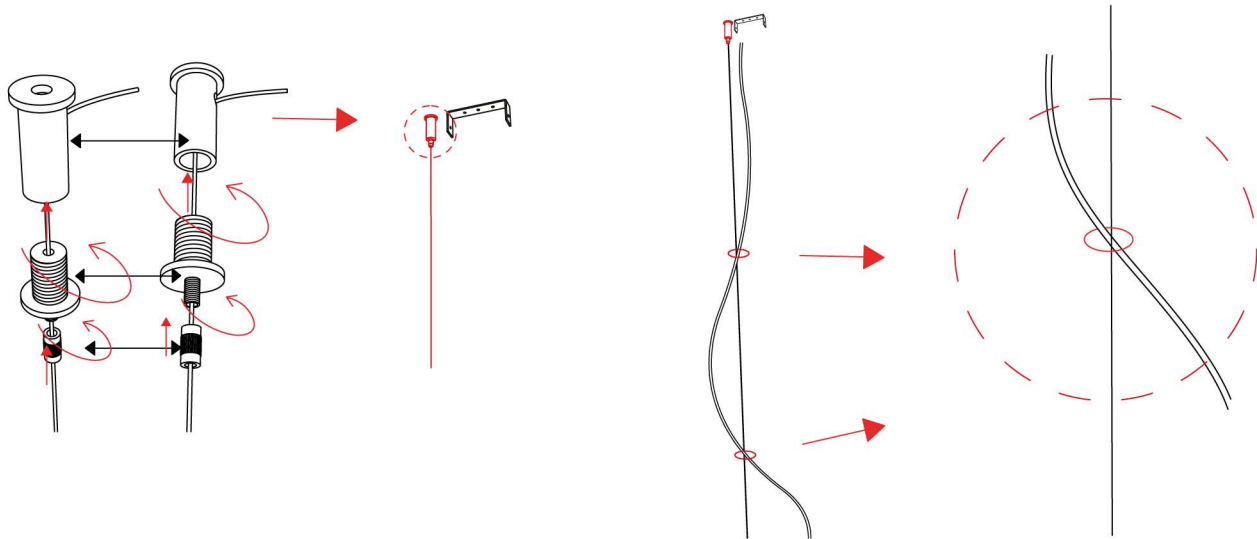


3. INSTALLING THE LIGHT

Ask an assistant to hold the assembled light (wooden body + glass shade).

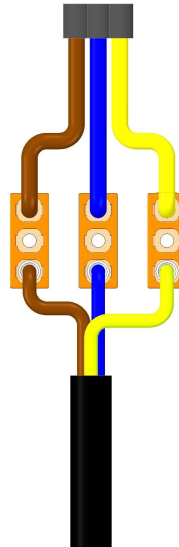
Thread the silicone rings onto the wire rope (they serve to undulate the power cable) and pass the wire rope through the first part of the wire rope stop, the so-called safety.

Unscrew the second part of the wire rope stop and slide it over the wire rope (ensure the end of the wire rope is not frayed). Press the two parts together to secure the wire rope. Next, pass the wire rope through the hole in the side of the ceiling anchor and cut it so that it partially extends from the anchor. Never cut the wire rope prior to installation. Adhering to these steps ensures safe anchoring of the wire rope, which bears the entire weight of the light.



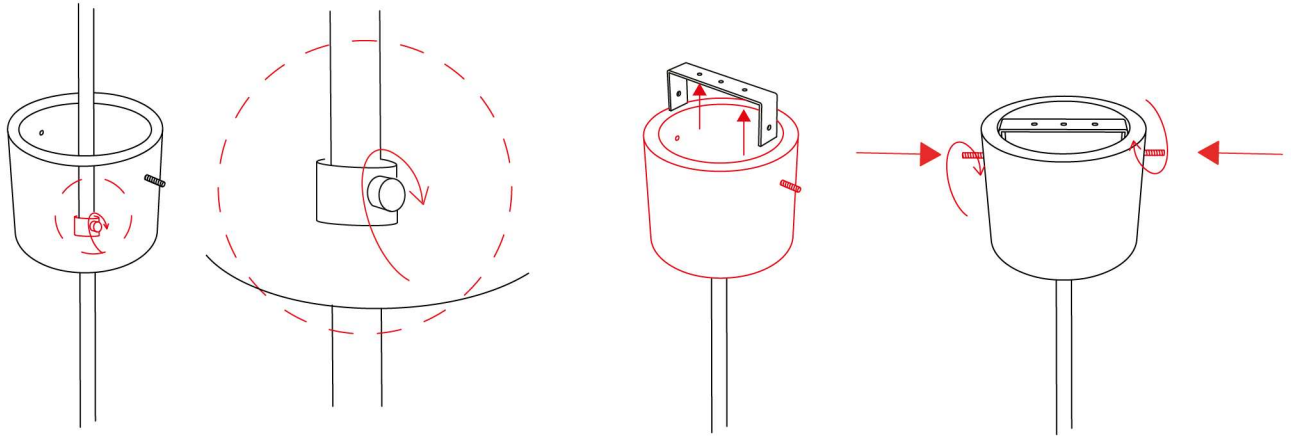
4. ELECTRICAL CONNECTION

Connect the light to the building wiring according to the connection diagram.



5. INSTALLING THE CEILING CANOPY

Pass the power cable through the silicone rings on the wire rope and then through the wooden ceiling canopy and secure it with the plastic cable stop. Connect the light to the building wiring, including the ground wire attached to the bracket. Use the two hex screws and hex key to secure the ceiling canopy to the bracket.



6. SWITCHING ON THE LIGHT

Restore power at the main circuit panel and verify that the light works properly.

