

RONY

05-Mar.-2018

1.0 LED

LED 7/10W | 350-500mA | COB 3-step | excl. power supply
 CE IP20 960°C 0,9m 36° 35°/35° 355°

white texture	110161W_
silver / grey	110161S_
black texture	110161B_
white texture (blade springs)	110161W_C

LIGHT COLOUR

2700K >90CRI 420-590lm 18Vf	3
3000K >90CRI 470-640lm 18Vf	5
1800-2850K >95CRI 320-440lm 18Vf	9

ALWAYS USE

for power supplies see our catalogue

1.0 MR16

QR-CBC51 max. 35W | GU5.3 | 12V | excl. transformer
 CE IP20 960°C 0,9m 35°/35° 355° DO NOT COVER WITH INSULATION

white texture	110110W0
silver / grey	110110S0
black texture	110110B0
white texture (blade springs)	110110WOC

ALWAYS USE

for transformers see our catalogue

1.0 PAR16

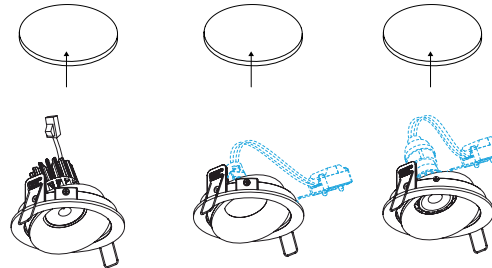
PAR16 max. 35W | GU10 | 100-240VAC | 50-60Hz
 CE IP20 960°C 0,9m 35°/35° 355° DO NOT COVER WITH INSULATION

white texture	110120W0
silver / grey	110120S0
black texture	110120B0
white texture (blade springs)	110120WOC

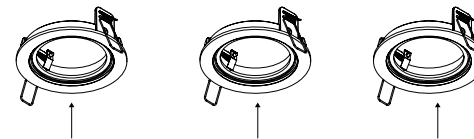
ALWAYS USE

for PAR16 lamps see our catalogue

①



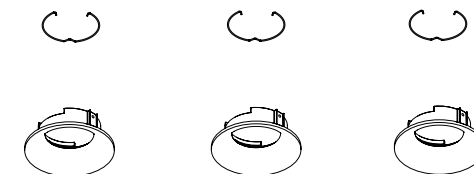
②



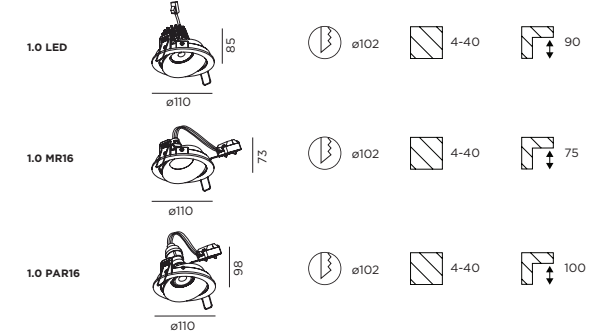
③



④



DIMENSIONS



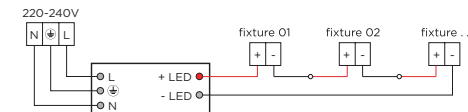
MOUNTING INSTRUCTION

- ① Make a hole in the ceiling according to the prescribed dimensions.

POWER CONNECTION

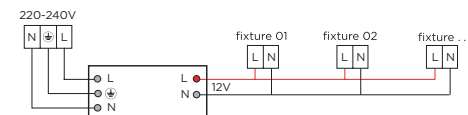
- ② SERIAL CONNECTION - for LED

Always use **POWER SUPPLY** according to the specifications of the LED-module

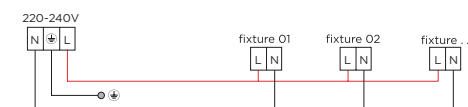


PARALLEL CONNECTION - for MR16

Always use **12V TRANSFORMER**



PARALLEL CONNECTION - for PAR16



- ③ Insert the lamp into the inner part of the RONY
- ④ Click the inner part of the RONY into the outer part



WEVER & DUCRÉ
LIGHTING

www.weverducre.com

Wever & Ducre bvba Kwadestraat 153 bus 2.1 8800 Roeselare

**INSTALLATION
INSTRUCTIONS**