

# TUBE CARRÉ CEILING

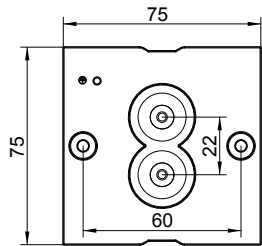
29-Aug.-2018

**1.0 LED**  
**LED** 8W | 220-240VAC | 50-60Hz | COB3-step | incl. PS | phase-cut dim  
 CE IP65 3000K >90 CRI 380lm  
 3000K | >90 CRI | 380lm  
 white texture 734264W5  
 dark grey texture 734264D5  
 black texture 734264B5

**1.0 PAR16**  
 PARI6 LED max.10W | GU10 | 100-240VAC | 50-60Hz  
 CE IP65  
 white texture 734220W0  
 dark grey texture 734220D0  
 black texture 734220B0

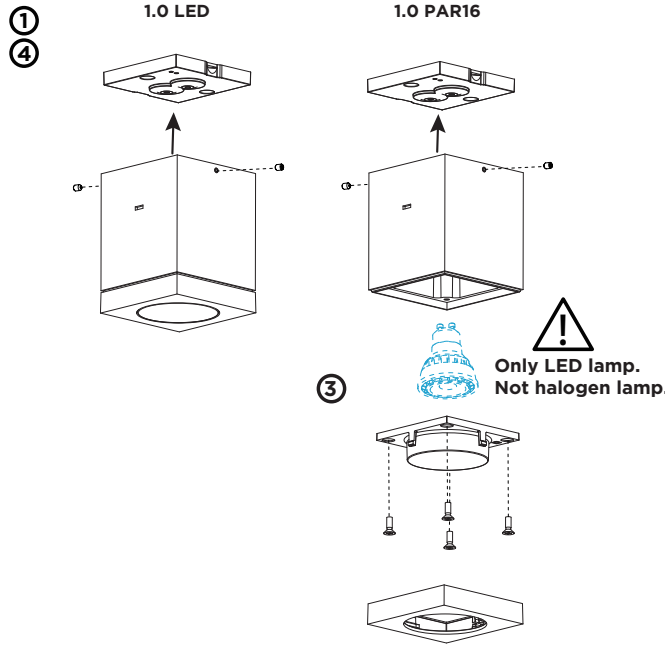
OPTIONAL: PARI6 LED GU10 6W | phase-cut dim : 2700K | 3000K | 1800-2850K

backplate:

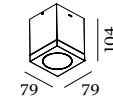


necessary for IP-rating

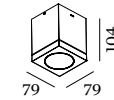
	<b>A</b>	<b>B</b>	<b>C</b>
<b>CABLE</b>			
<b>TYPE</b>	ROUND H05RN-F H07RN8-F H07RN-F	ROUND H05RN-F	ROUND
<b>OUTSIDE Ø</b>	min 6.8mm max 8.9mm	min 5mm max 6.8mm	min 1.5mm max 2.6mm
<b>CONDUCTION SECTION</b>	2or3x 0.75mm <sup>2</sup> 2or3x 1.0mm <sup>2</sup> 2or3x 1.5mm <sup>2</sup>	2or3x 0.75mm <sup>2</sup> 2x 1.0mm <sup>2</sup>	0.75mm <sup>2</sup> 1.5mm <sup>2</sup>



## DIMENSIONS



1.0 LED



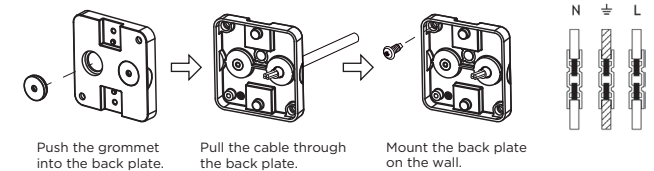
1.0 PAR16

## MOUNTING INSTRUCTION

- Remove the backplate from the fixture and mount it on the ceiling with screws.

## POWER CONNECTION

- Exterior: WATERPROOF Connection  
 IP-rated connections for wall fixtures: cable isolation for round cables  $\varnothing$  4.5-7.5 mm, should be in the grommet. For cable use  $\varnothing$  7.0-9.5 mm: replace the grommet with the other grommet in the bag. Refer to overview table.



- For PAR16 version:
  - Pry the body cover to open with a straight screwdriver.
  - loosen the four screws of the glass cover and remove it.
  - Insert the lamp
  - put back the glass cover with the four screws.
  - place back the body cover by pushing to click.
- Mount the luminaire on the backplate with the allen screws.

The light source of the integrated LED is not replaceable;  
 When the light source reaches its end of life the whole luminaire shall be replaced.

Caution, risk of electric shock