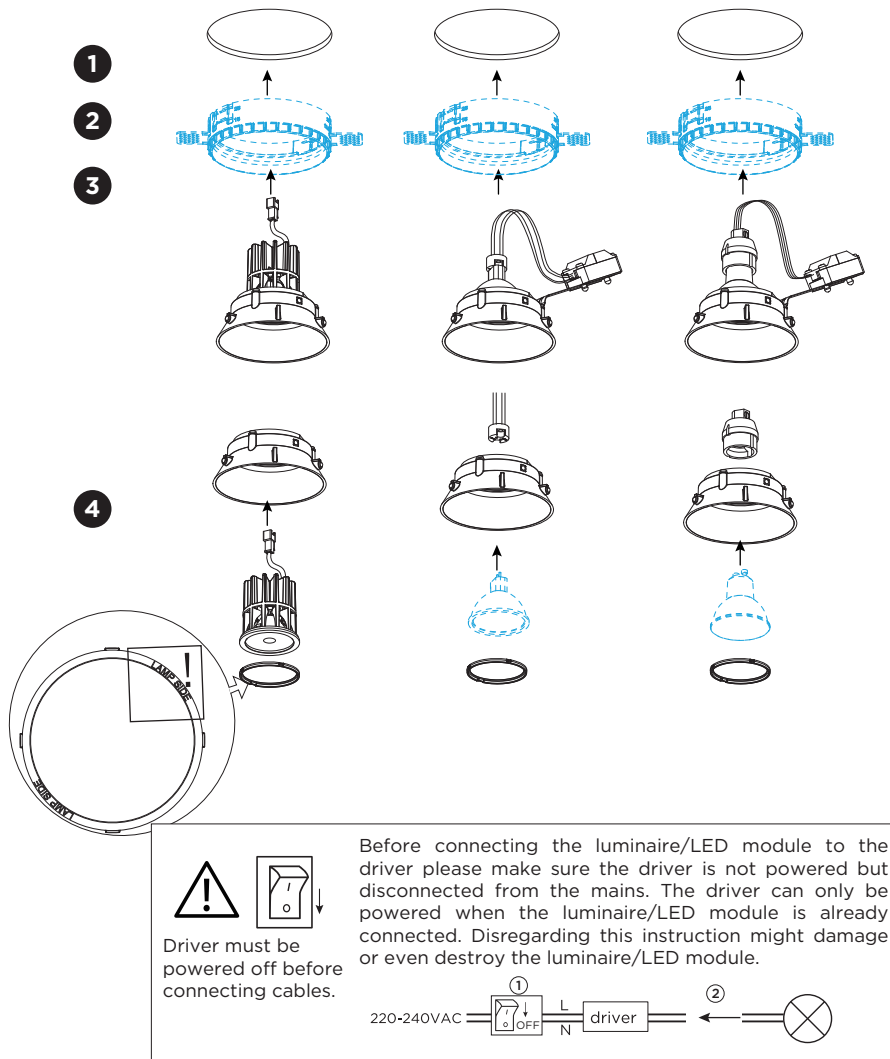
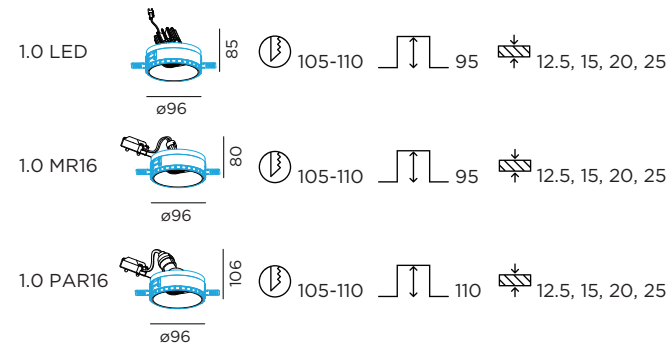


DEEP ADJUST trimless

INSTALLATION INSTRUCTIONS | MAY 2020



DIMENSIONS



MOUNTING INSTRUCTION

- 1 Make a hole in the ceiling according to the prescribed dimensions.
- 2 Install the plasterkit into the hole (please see the page 2 for the detail).

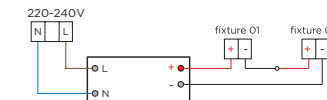
3 POWER CONNECTION

LED Always use a driver according to the specifications of the LED module.

Single connection



Multiple connection



PAR16

Single connection



Multiple connection

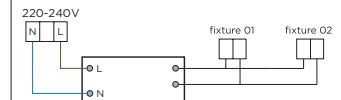


MR16

Single connection



Multiple connection



- 4 Push the luminaire in the plasterkit hole.

PB19-010-662-00_v0

DEEP ADJUST trimless

INSTALLATION INSTRUCTIONS | MAY 2020

Install the plasterkit into the ceiling hole.

