

ODREY SUSPENDED

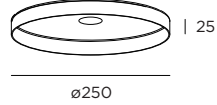
INSTALLATION INSTRUCTIONS | MAY 2020

SHADES

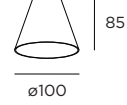
shade 1.0



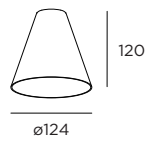
shade 2.0



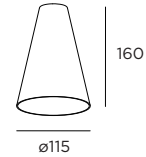
shade 3.0



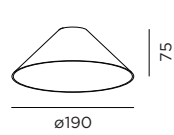
shade 4.0



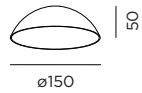
shade 5.0



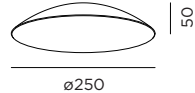
shade 6.0



shade 7.0



shade 8.0



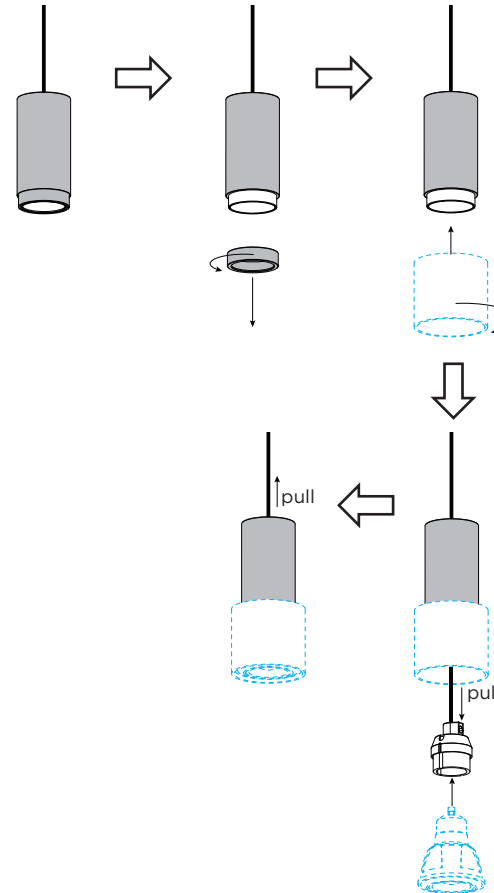
inner cover 1.0



inner cover 2.0



installation with shade 1.0



DIMENSIONS



ODREY SUSPENDED 1.0

POWER CONNECTION

connect to 100-240V

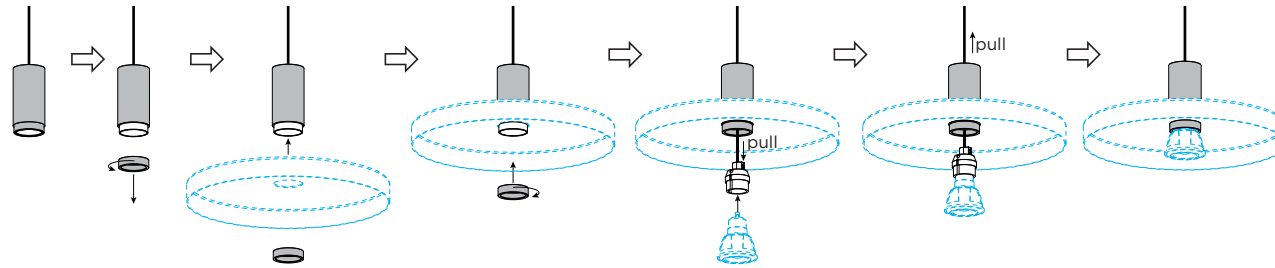


for installation with Shade 2.0 & 3.0-8.0, please find the details on page 2

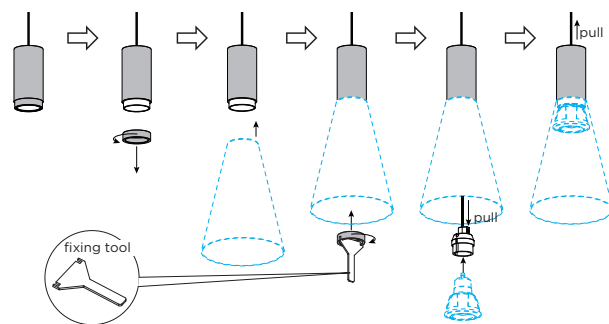
ODREY SUSPENDED

INSTALLATION INSTRUCTIONS | MAY 2020

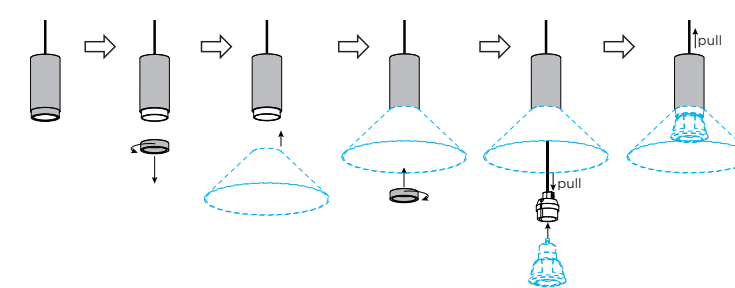
installation with shade 2.0



installation with shade 3.0 / 4.0 / 5.0 (always using the fixing tool)



installation with shade 6.0 / 7.0 / 8.0



installation with shade + inner cover

