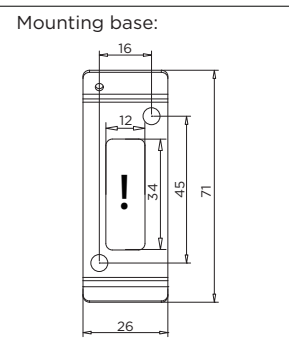
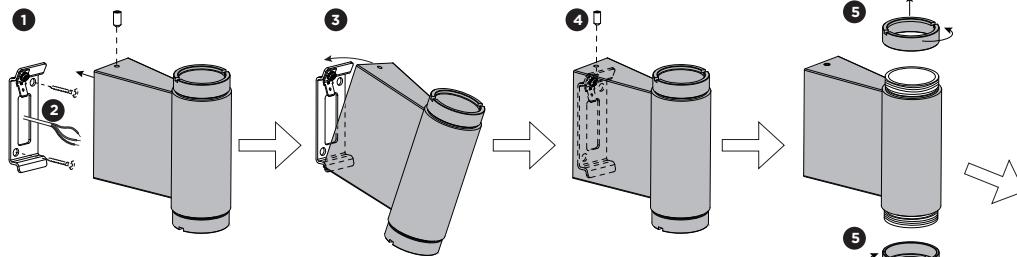


ODREY WALL SURFACE 2.0

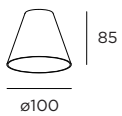
INSTALLATION INSTRUCTIONS | JULY 2020

installation with shade 3.0/4.0

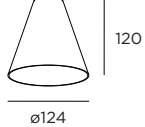


SHADES

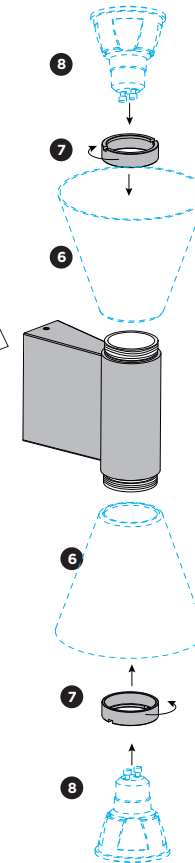
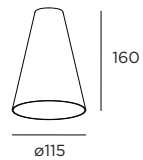
shade 3.0



shade 4.0

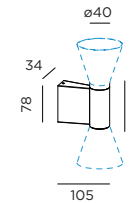


shade 5.0



DIMENSIONS

2.0 PAR16



MOUNTING INSTRUCTION

- 1 Remove the mounting base from the luminaire by loosening the socket screw and mount it on the wall with screws (screws are not included).
- 2 **POWER CONNECTION**
Connect to 100-240V.
Connect the earth cable.
- 3 Attach the luminaire to the mounting base with the lower side first and tilt towards the wall as shown.
- 4 Fixate the luminaire on the base with the socket screw.
- 5 Screw the lock rings out the luminaire.
- 6 Put the covers on.
- 7 Screw back the lock rings.
- 8 Mount lamps to the luminaire.

for installation with Shade 5.0, please find the details on page 2

PB19-010-665-00_v0

ODREY WALL SURFACE 2.0

INSTALLATION INSTRUCTIONS | JULY 2020

installation with shade 5.0

