

BOX

29-07-2015

1.0 LED

LED 4W | 220-240VAC | 50-60Hz | PCB 3-step | incl. PS | phase-cut dim
 CE P20 960°C 0.3m

white texture	321164W_
aluminium brushed	321164L_
gold	321164G_
bronze	321164Q_
copper	321164P_
black texture	321164B_

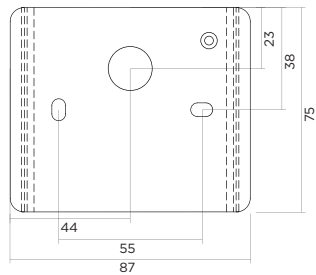
LIGHT COLOUR

2200K >80CRI 315lm	1
2700K >80CRI 420lm	2
3000K >80CRI 420lm	4

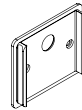
1.0

LED 4W | 220-240VAC | 50-60Hz | PCB 3-step | incl. PS | phase-cut dim
 CE P65 960°C 0.3m

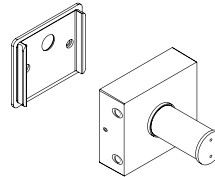
3000K >80CRI 420lm	
white texture	714164W4
dark grey texture	714164D4
black texture	714164B4



②

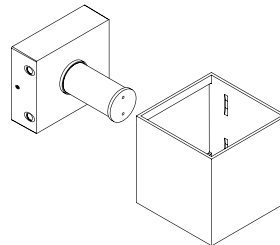


④

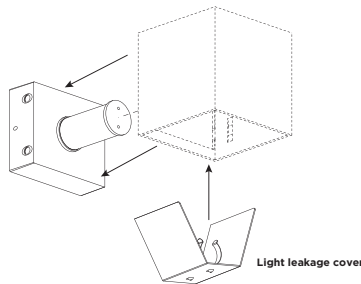


⑤

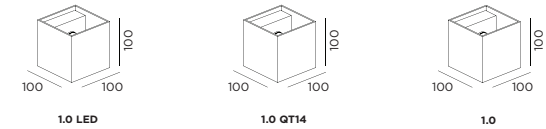
⑥



⑦



DIMENSIONS



① MOUNTING INSTRUCTION

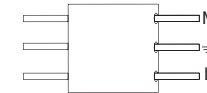
Remove the lamp base

② Fixate the back plate to the wall with screws

③ POWER CONNECTION

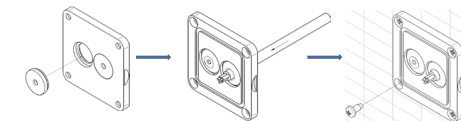
Connect the power supply.

Interior: STANDARD version



Exterior: WATERPROOF Connection

IP-rated connections for wall fixtures: cable isolation for round cables \varnothing 4.5-7.5 mm, should be in the grommet. For cable use \varnothing 7.0-9.5 mm: replace the grommet with the other grommet in the bag.



Push the grommet into the back plate.

Pull the cable through the back plate.

Mount the back plate on the wall.

④ Fixate the lamp base to the back plate.

⑤ Fixate the lamp cover to the back base.

⑥ Fixate the Light leakage cover to the back base.

BOX

29-07-2015

3.0 LED

LED 2x4W | 220-240VAC | 50-60Hz | PCB 3-step | incl. PS | phase-cut dim

CE \oplus IP20 \oplus 960°C \oplus 0.3m \oplus

white texture	321244W_
aluminium brushed	321244L_
gold	321244G_
bronze	321244Q_
copper	321244P_
black texture	321244B_

LIGHT COLOUR

2200K >80CRI 2x315lm	1
2700K >80CRI 2x340lm	2
3000K >80CRI 2x340lm	4

OPTIONAL

flaps for adjustable beam angle	900401W0
---------------------------------	----------

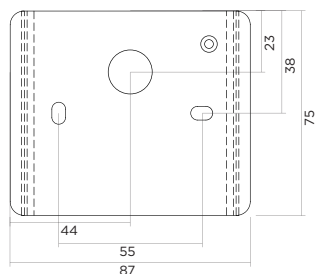
3.0

LED 2x4W | 220-240VAC | 50-60Hz | PCB 3-step | incl. PS | phase-cut dim

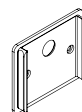
CE \oplus IP65 \oplus 960°C \oplus 0.3m \oplus \oplus \oplus \oplus

3000K >80CRI 420lm	
white texture	714264W4
dark grey texture	714264D4
black texture	714264B4

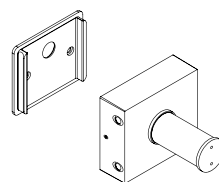
3.0



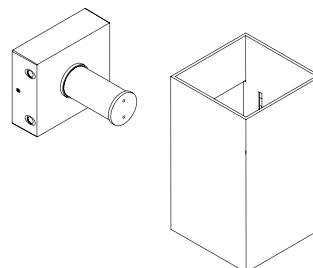
②



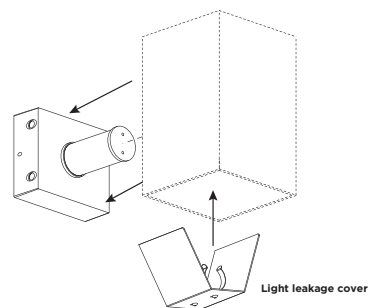
④



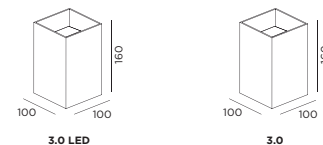
⑤



⑥



DIMENSIONS

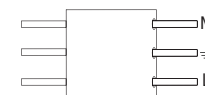


MOUNTING INSTRUCTION

- Remove the lamp base
- Fixate the back plate to the wall with screws
- POWER CONNECTION**

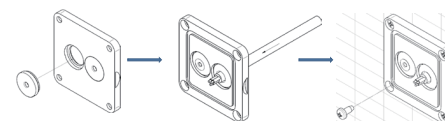
Connect the power supply.

Interior: STANDARD version



Exterior: WATERPROOF Connection

IP-rated connections for wall fixtures: cable isolation for round cables \varnothing 4.5-7.5 mm, should be in the grommet. For cable use \varnothing 7.0-9.5 mm: replace the grommet with the other grommet in the bag.



Push the grommet into the back plate.

Pull the cable through the back plate.

Mount the back plate on the wall.

- Fixate the lamp base to the back plate.
- Fixate the lamp cover to the back base.
- Fixate the Light leakage cover to the back base.



WEVER & DUCRÉ
LIGHTING

www.weverducre.com

INSTALLATION
INSTRUCTIONS

RAY

29-07-2015

1.0 LED

LED 4W | 220-240VAC | 50-60Hz | PCB 3-step | incl. PS | phase-cut dim

CE IP20 960°C 0.3m

white texture	322164W
aluminium brushed	322164L
gold	322164G
bronze	322164Q
copper	322164P
black texture	322164B

LIGHT COLOUR

2200K >80CRI 315lm	1
2700K >80CRI 420lm	2
3000K >80CRI 420lm	4

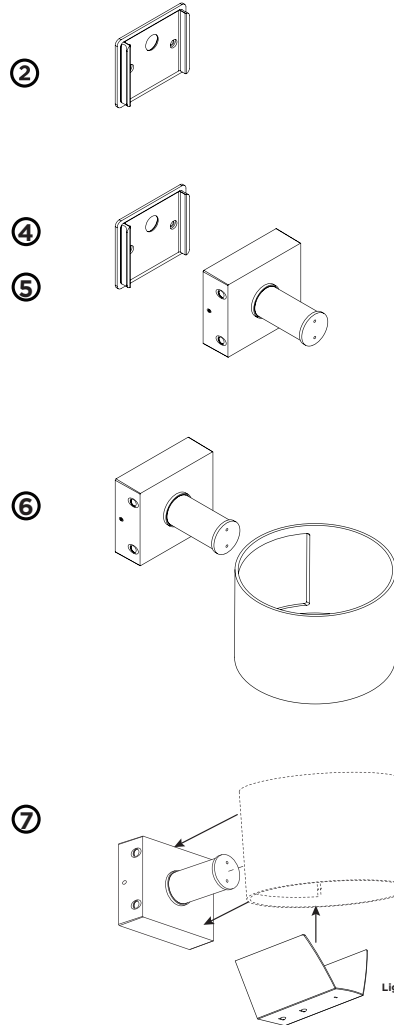
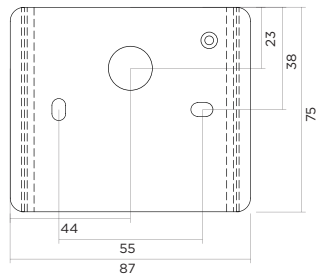
1.0

LED 4W | 220-240VAC | 50-60Hz | PCB 3-step | incl. PS | phase-cut dim

CE IP65 960°C 0.3m

3000K | >80CRI | 420lm

white texture	715164W4
dark grey texture	715164D4
black texture	715164B4



DIMENSIONS



1 MOUNTING INSTRUCTION

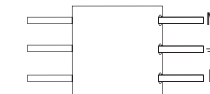
Remove the lamp base

2 Fixate the back plate to the wall with screws

3 POWER CONNECTION

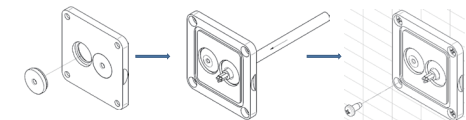
Connect the power supply.

Interior: STANDARD version



Exterior: WATERPROOF Connection

IP-rated connections for wall fixtures: cable isolation for round cables \varnothing 4.5-7.5 mm, should be in the grommet. For cable use \varnothing 7.0-9.5 mm: replace the grommet with the other grommet in the bag.



Push the grommet into the back plate. Pull the cable through the back plate. Mount the back plate on the wall.

4 Fixate the lamp base to the back plate.

5 Fixate the lamp cover to the back base.

6 Fixate the Light leakage cover to the back base.

RAY

29-07-2015

3.0 LED

LED 2x4W | 220-240VAC | 50-60Hz | PCB 3-step | incl. PS | phase-cut dim

CE IP20 960°C 10.3m

white texture	322244W
aluminium brushed	322244L
gold	322244G
bronze	322244Q
copper	322244P
black texture	322244B

LIGHT COLOUR

2200K >80CRI 2x315lm	1
2700K >80CRI 2x340lm	2
3000K >80CRI 2x340lm	4

OPTIONAL

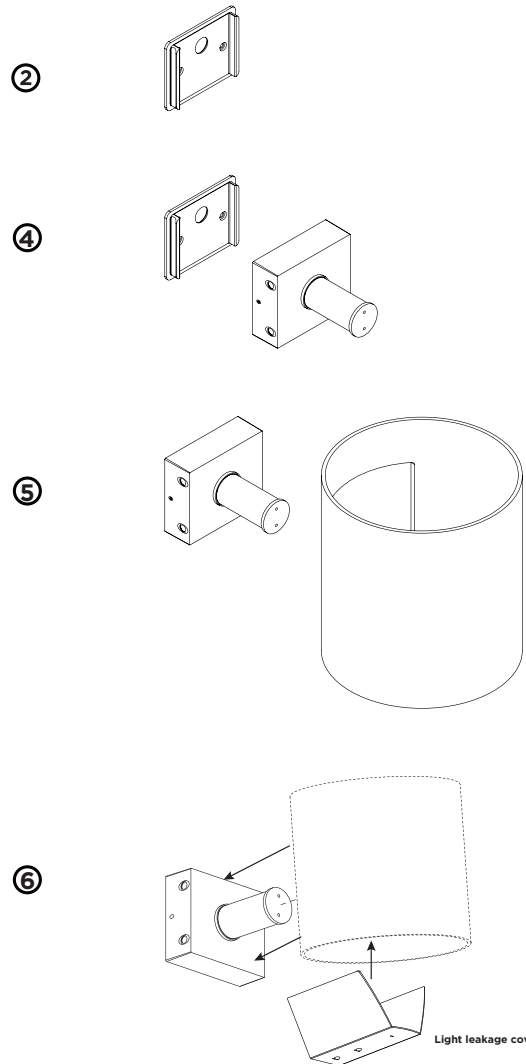
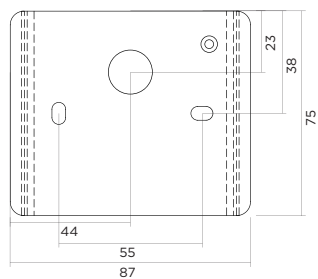
flaps for adjustable beam angle	900401W0
---------------------------------	----------

3.0

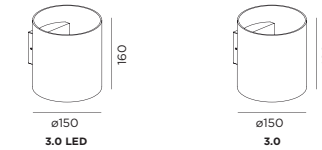
LED 2x4W | 220-240VAC | 50-60Hz | PCB 3-step | incl. PS | phase-cut dim

CE IP65 960°C 10.3m

3000K >80CRI 420lm	
white texture	715264W4
dark grey texture	715264D4
black texture	715264B4



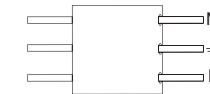
DIMENSIONS



MOUNTING INSTRUCTION

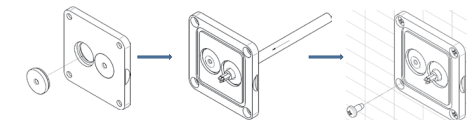
- Remove the lamp base
- Fixate the back plate to the wall with screws
- POWER CONNECTION**
Connect the power supply.

Interior: STANDARD version



Exterior: WATERPROOF Connection

IP-rated connections for wall fixtures: cable isolation for round cables \varnothing 4.5-7.5 mm, should be in the grommet. For cable use \varnothing 7.0-9.5 mm: replace the grommet with the other grommet in the bag.



- Fixate the lamp base to the back plate.
- Fixate the lamp cover to the back base.
- Fixate the Light leakage cover to the back base.