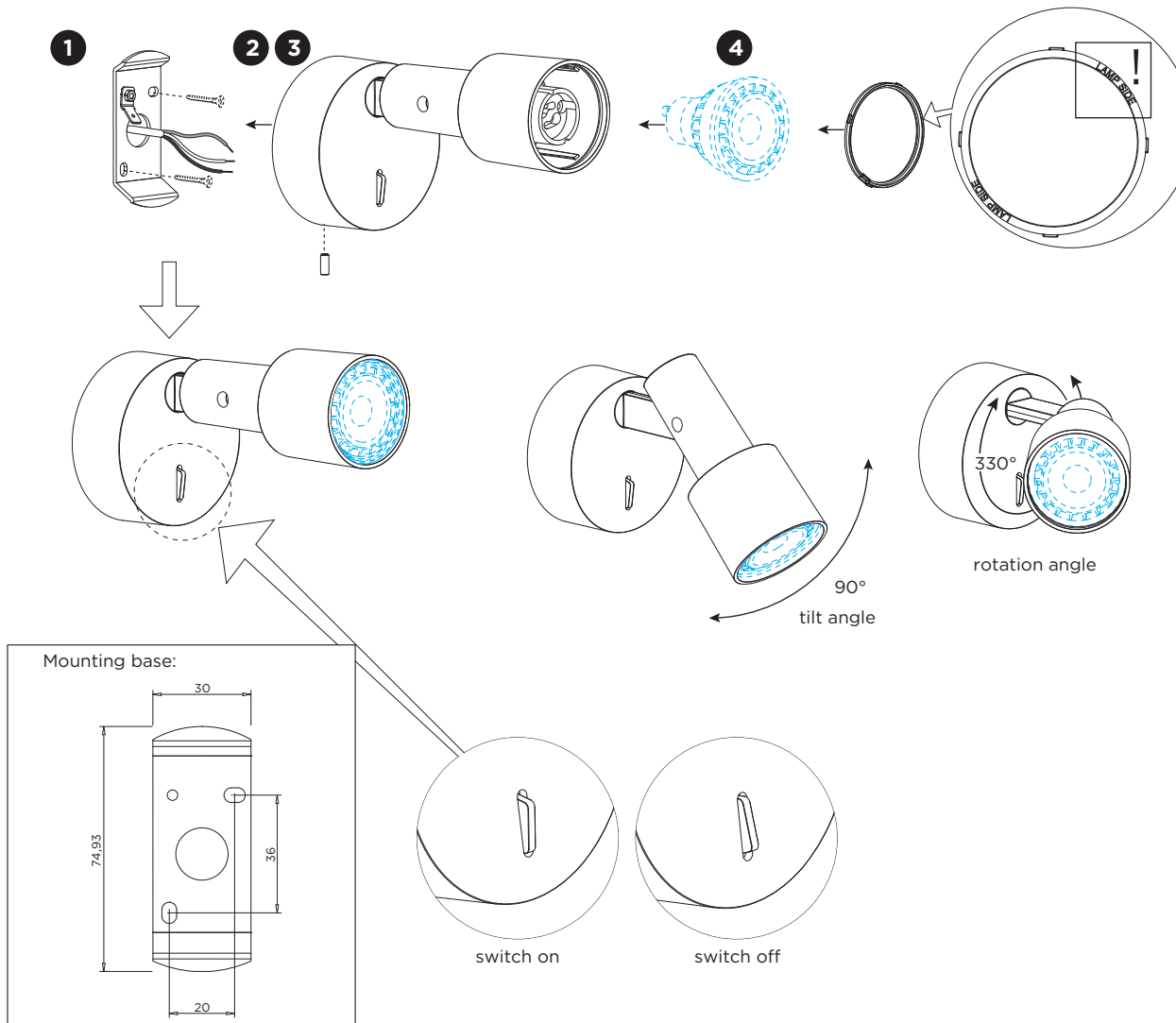
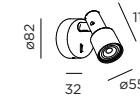


SARA snooze

INSTALLATION INSTRUCTIONS | MAY 2020



DIMENSIONS



1.0 PAR16

MOUNTING INSTRUCTION

- 1** Remove the mounting base from the luminaire by loosening the socket screw and mount it on the wall with screws (screws are not included).
- 2** **POWER CONNECTION**
Connect to 220-240V.

	Connect the earth cable.
--	------------------------------
- 3** Fixate the luminaire on the base with the socket screw.
- 4** Mount the lamp in the luminaire using the spring clip.