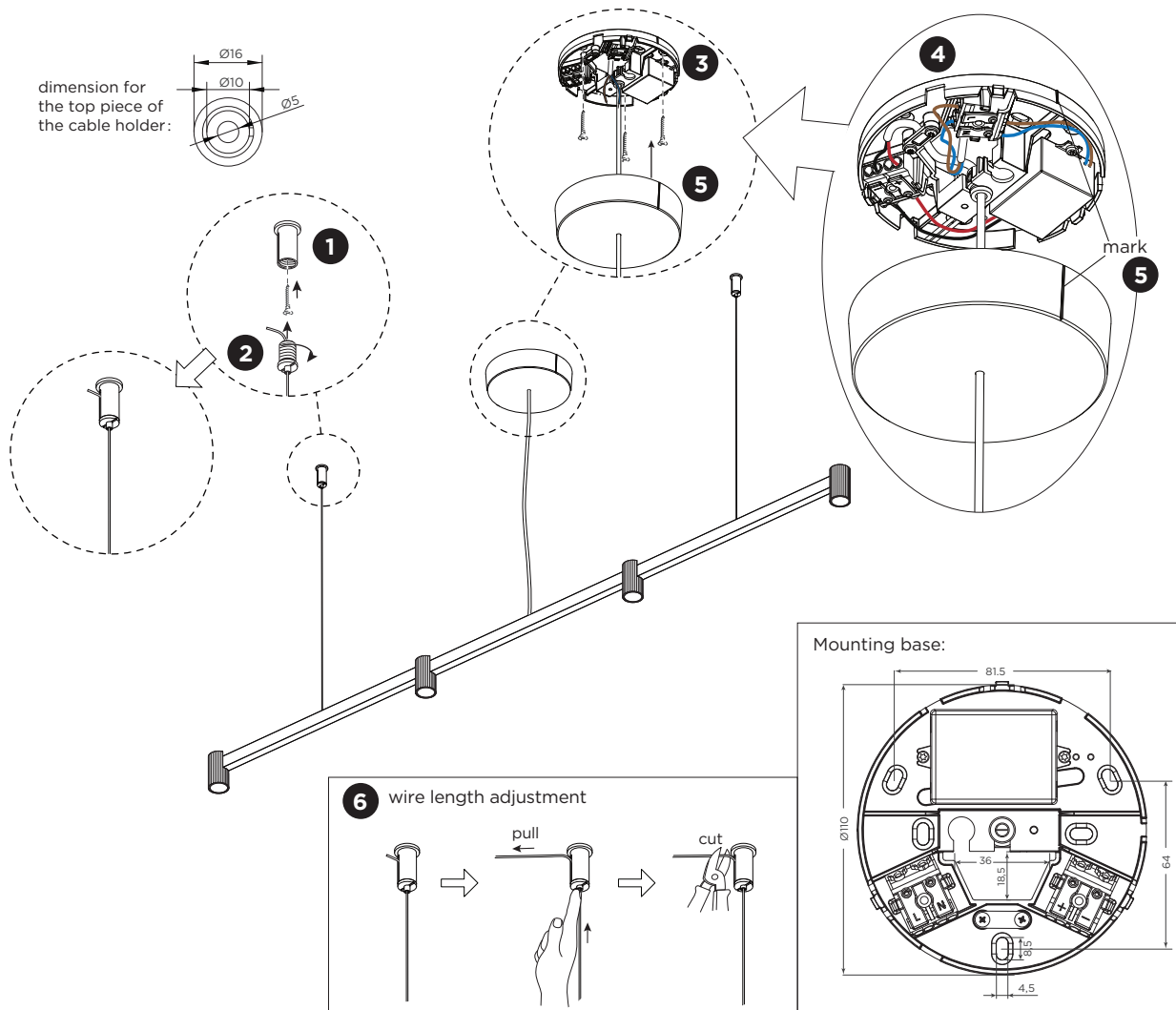
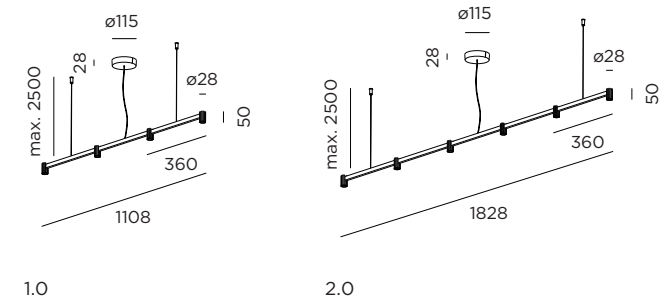


TRACE CHANDELIER SUSPENDED

INSTALLATION INSTRUCTIONS | JUNE 2023

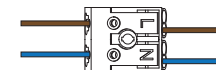


DIMENSIONS



MOUNTING INSTRUCTION

- 1** Screw out the top pieces of the cable holders and fix them on the ceiling with screws (screws are not included).
- 2** Screw the cable holders back to the top piece.
- 3** Remove the cover of the mounting base by pulling and mount the base on the ceiling with screws (screws are not included).
- 4 POWER CONNECTION**
Connect to 220-240V.

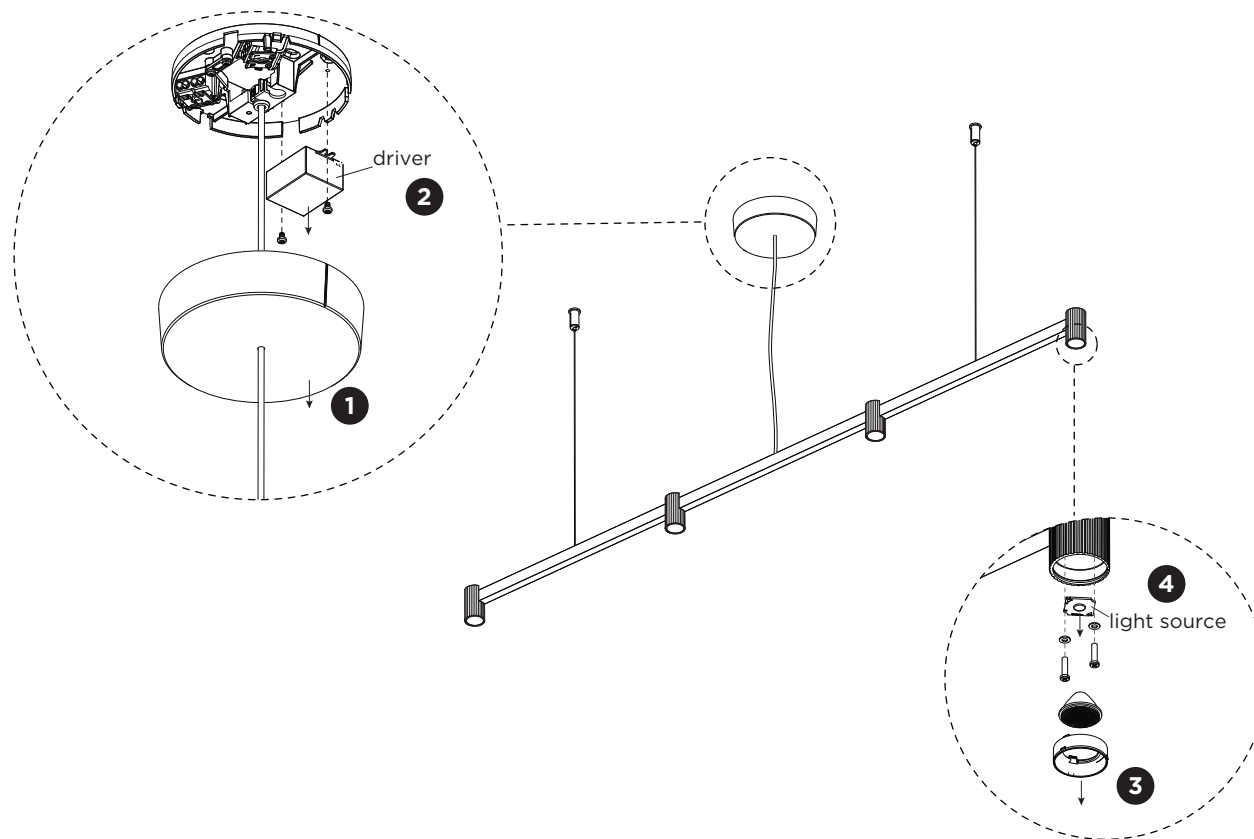


- 5** Push the cover on the mounting base until it clicks. When doing so, align the marks on both of the mounting base and the cover.
- 6** The length of the wire can be adjusted according to the need.

PB19-010-858-00_v0

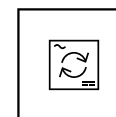
TRACE CHANDELIER SUSPENDED

INSTALLATION INSTRUCTIONS | JUNE 2023

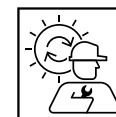


DISMOUNTING AND RECYCLING INSTRUCTIONS Light source & driver

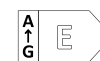
- 1** Pull down the cover from the mounting base.
- 2** Disconnect the wires and unscrew the driver to remove it.
- 3** Pull out the fixing ring(s), remove the lens(es).
- 4** Unscrew the screws, disconnect the wires and remove the light source(s).



The driver can be replaced by the end user.



The light source is replaceable by an authorized professional.
For advice contact your Wever & Ducré customer service contact point.



This luminaire contains a light source with the energy class E.