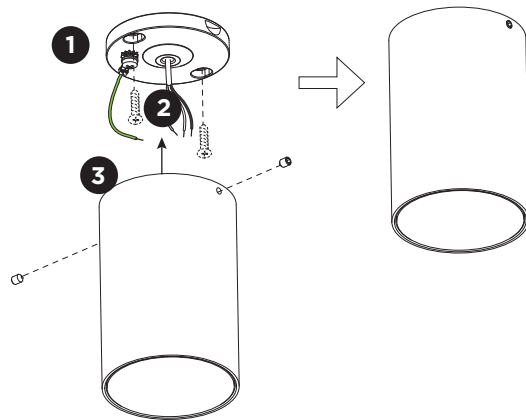


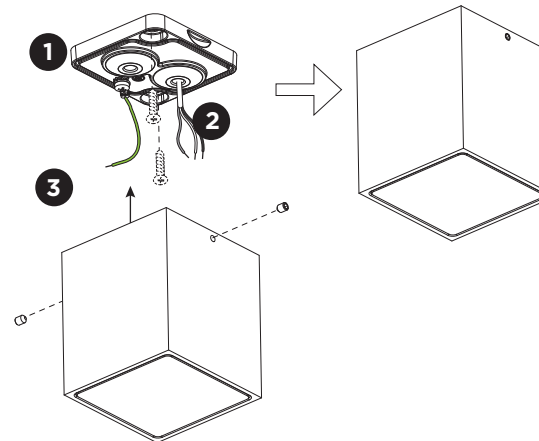
# TRAM

INSTALLATION INSTRUCTIONS | DESEMBER 2020

## 1.0 ROUND



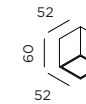
## 1.0 CARRÉ



## DIMENSIONS



1.0 ROUND

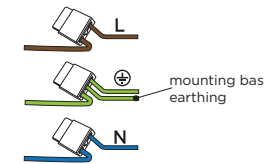


1.0 CARRÉ

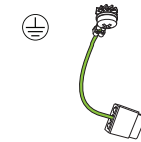
## MOUNTING INSTRUCTION

**1** Remove the mounting base from the luminaire by loosening the socket screws and mount it on the ceiling with screws (screws are not included).

**2** POWER CONNECTION  
Connect to 220-240V.



Connect the earth cable.



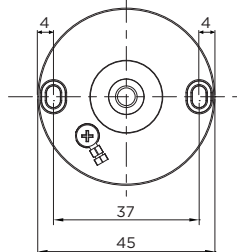
Please use a matching grommet based on the used 220-240V cable and the corresponding type in the overview table.

	A	B	C	D
CABLE				
TYPE	ROUND H05RN-F H07RN8-F H07RN-F	ROUND H05RN-F	ROUND	ROUND
OUTSIDE Ø	min 6.8mm max 8.9mm	min 5mm max 6.8mm	min 1.5mm max 2.6mm	min 1.5mm max 2.6mm
CONDUCTION SECTION	2or3x 0.75mm <sup>2</sup> 2or3x 1.0mm <sup>2</sup> 2or3x 1.5mm <sup>2</sup>	2or3x 0.75mm <sup>2</sup> 2x 1.0mm <sup>2</sup>	0.75mm <sup>2</sup> 1.5mm <sup>2</sup>	0.75mm <sup>2</sup> 1.5mm <sup>2</sup>

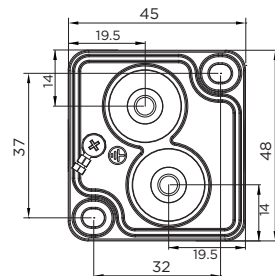
**3** Fixate the luminaire on the base with the socket screws.

Mounting base:

### 1.0 ROUND



### 1.0 CARRÉ



**Caution!**  
Because of the minimalistic design of this luminaire, space inside the luminaire for wiring through is very limited and not recommended.