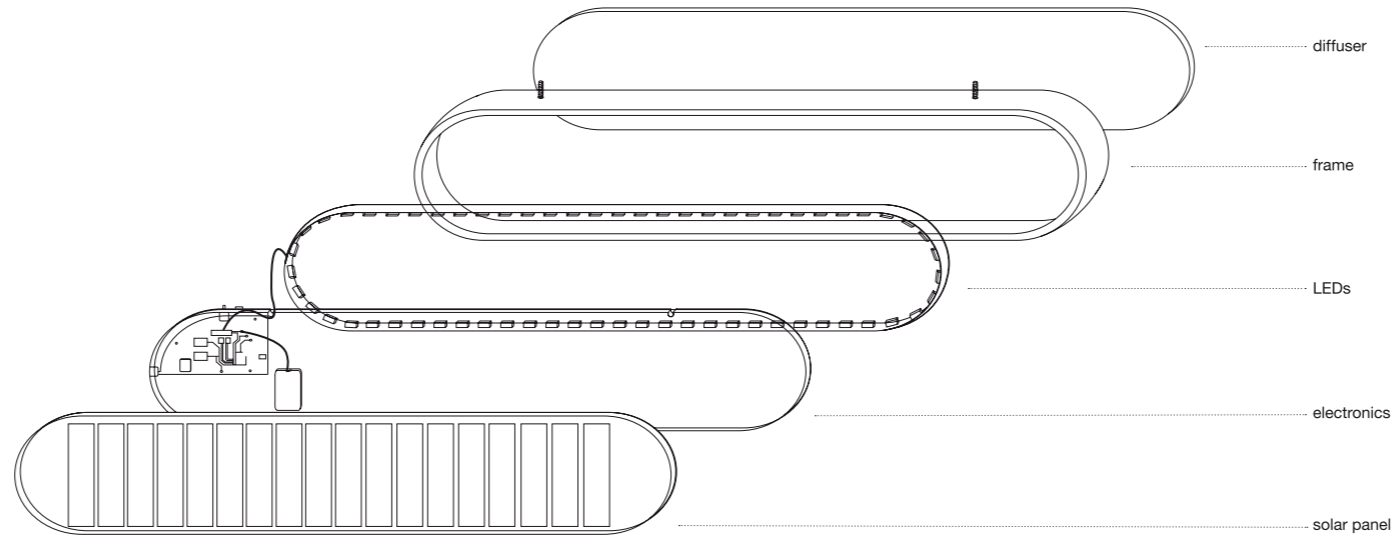


[www.graypants.eu/sunne](http://www.graypants.eu/sunne)

designed by Marjan van Aubel  
made in the Netherlands

v0424



( s u n n e )  
by Graypants

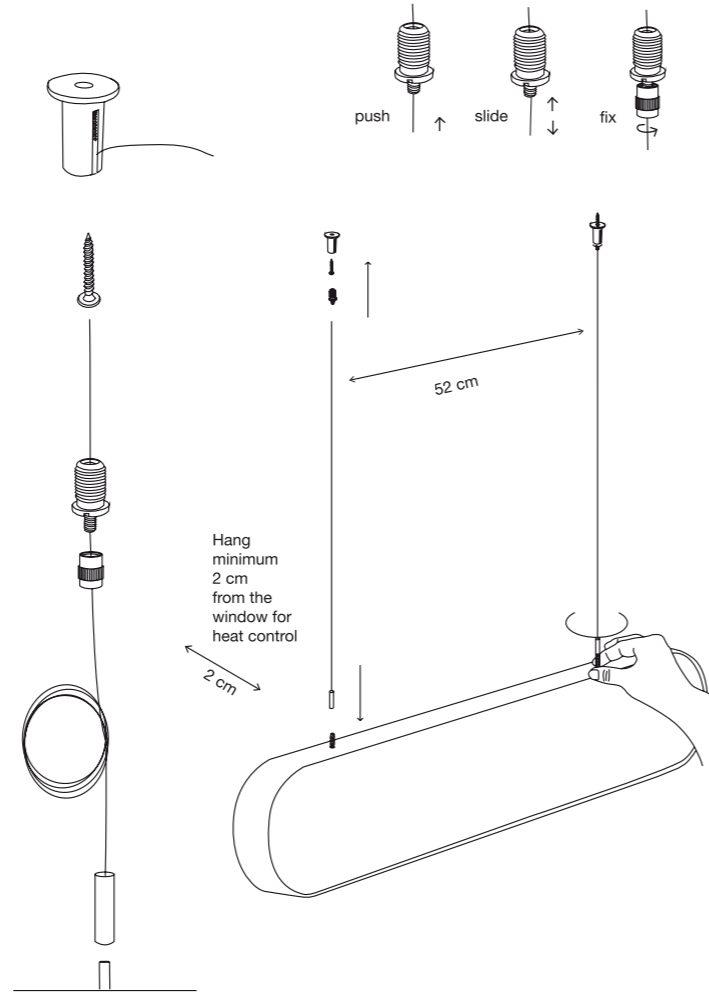
Today, solar is science.  
But why can't energy be beautiful too?

Sunne's sleek solar design combines art, sustainability and technology to create the indoor light of the future.

Sunne harvests solar energy; it charges itself when it captures sun-rays. Sunne is intelligent; how brightly it glows corresponds to its battery level, to maximise the length of time it will glow for.

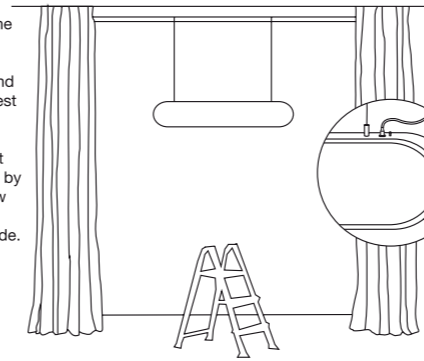
With a fully charged battery, Sunne can glow for more than 14 hours. This means it can still glow for you even on a cloudy day. Each evening, Sunne will use some of this stored energy when it is switched on. Then the next day, as the sun shines, Sunne will generate energy to top up the battery level again. This is Sunne's self-sufficient energy cycle, powered by the sun.

Here is a quick start guide for you to start enjoying your Sunne.



Hang Sunne in front of a sunny window, and it will harvest energy.





It shouldn't be shaded by the window frame or trees outside.



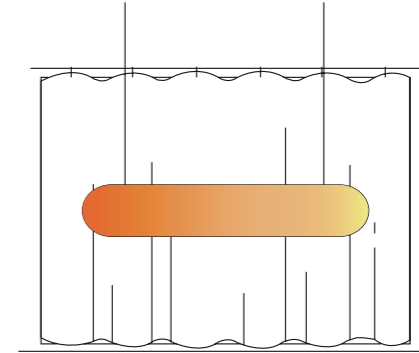
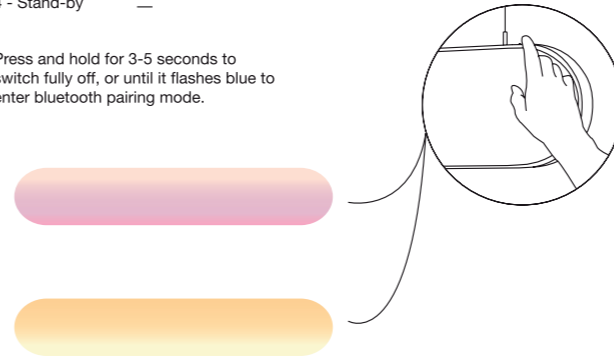
In case of dark weather, you can give Sunne a charge boost using the USB-C port; *charge with a 5V-2A charger, a USB 3.2 cable (or higher) rated for at least 2A.*

This light indicates when Sunne is charging, and blinks when fully charged.

Sunne has one button to switch between light modes:

- 1 - Sunne Rise 
- 2 - Sunne Light 
- 3 - Sunne Set 
- 4 - Stand-by 

Press and hold for 3-5 seconds to switch fully off, or until it flashes blue to enter bluetooth pairing mode.



After charging during the day, Sunne can switch on automatically at sunset, if configured in the app.

To change more light settings and check the battery status and energy harvested, download the Sunne app.

This also gives you access to firmware updates for continuous improvements.

