



WEVER & DUCRÉ  
LIGHTING

# RON 1.0 LED

111161B5

## GENERAL

Ceiling

Recessed

Jet Black

IP20

Interior

529<sup>a</sup> to 710<sup>b</sup> lm

9005<sup>c</sup>

## LED

3000 K

CRI 90

L80 / 50000 h

3-step binning

## OPTICAL

Flood

Beam angle 36°

## PHYSICAL

Length 110 mm

Width 110 mm

Height 85 mm

0.36 kg

Standard Springs

Tilt max 35°

Rotation 355°

## ELECTRICAL

excl. power supply

18 V

Total connected power 7.9<sup>a</sup> to 12<sup>b</sup> W

LED Inset 5.9<sup>a</sup> to 8.7<sup>b</sup> W

59<sup>b</sup> to 67<sup>a</sup> lm/W

350<sup>a</sup> to 500<sup>b</sup> mA

PC3

0.3 m

## CUTOUT

Diameter 102-104 mm

Min. ceiling thickness 4 mm

Max. ceiling thickness 25 mm

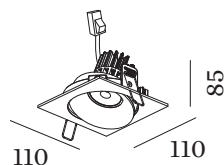
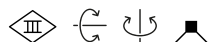
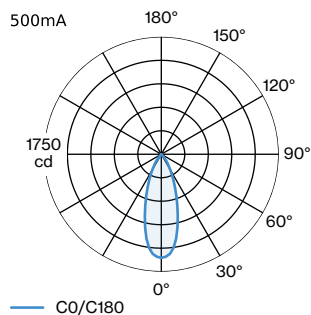
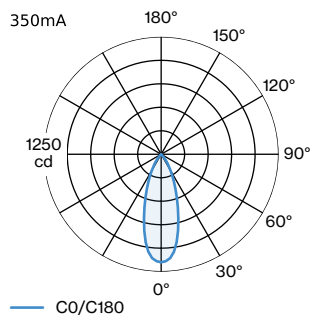
Recessed depth 90 mm

<sup>a</sup> 350mA

<sup>b</sup> 500mA

<sup>c</sup> RAL Palette colors may deviate slightly due to production conditions.

## LIGHT DISTRIBUTION



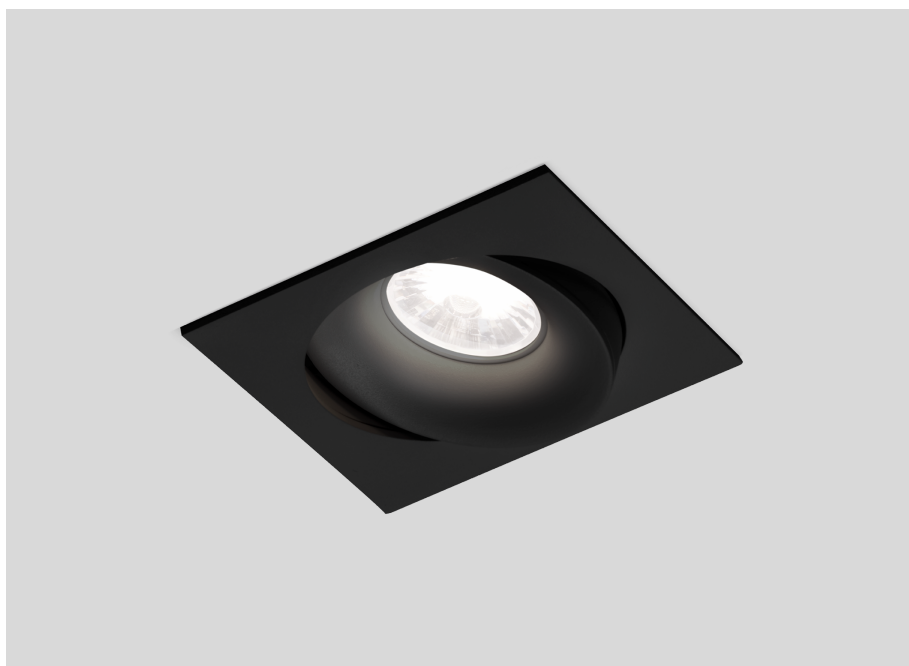
Project

Type

Notes

Quantity

Date





WEVER & DUCRÉ  
LIGHTING

# RON 1.0 LED

111161B5

## CONE DIAGRAM

flood 36° 350mA flood 36° 500mA

h (m)	E0° (lx)	ø (m)
1	1150	0.65
2	288	1.29
3	128	1.94
4	71	2.58
5	46	3.23

h (m)	E0° (lx)	ø (m)
1	1540	0.65
2	386	1.29
3	172	1.94
4	96	2.58
5	61	3.23

## ELECTRICAL

### Power Supply 500mA

TYPE	L · W · H (MM)	VOLTAGE	ORDERCODE
10W   11-20V	101.5 · 51 · 29.2	11 - 20V	9 0 2 1 4 4 0 5
15W   13.5-30V   phase-cut dim 5-100%	102 · 51 · 30	13.5 - 30V	9 0 2 2 4 5 0 1
21W   28-42V   phase-cut dim 5-100%	101.5 · 51 · 29.5	28 - 42V	9 0 2 2 4 7 0 1
10W   11-20V   1-10V dim	100 · 43 · 22.5	11 - 20V	9 0 2 3 4 4 0 1
20W   5-40V   DALI 0-100%	111 · 52 · 22	5-40V	9 0 2 4 4 6 0 2
25W   20-50V   DSI   switch dim   DALI 1-100%	130 · 43 · 31	20 - 50V	9 0 2 5 4 6 0 3

### Power Supply 350mA | 500mA | 700mA

TYPE	L · W · H (MM)	ORDERCODE
20W   350mA 25-50V   500mA 20V-4   700mA 14V-28.5V	101.5 · 51 · 29.5	9 0 2 1 8 6 0 1

### Power Supply 350mA

TYPE	L · W · H (MM)	VOLTAGE	ORDERCODE
10W   14-28V   1-10V dim	101.5 · 51 · 29.5	14 - 28V	9 0 2 2 3 4 0 1
10W   12-28V   phase-cut dim	102 · 38 · 21	12 - 28V	9 0 2 2 3 4 0 2
15W   21-42V   phase-cut dim	101.5 · 51 · 29.5	21 - 42V	9 0 2 2 3 5 0 3