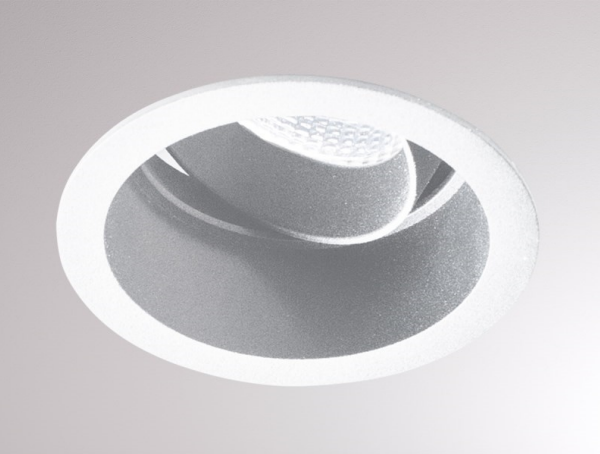


SATOR ROUND

305-30013500

SATOR ROUND R RECESSED SPOTLIGHT made of aluminium, white, similar to RAL 9003, beam 24°, light output direct, tilting 30°, with converter, max. 250mA, dimmability: see converter, IP44/IP20

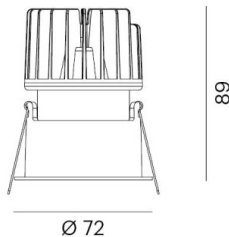


DRAWING

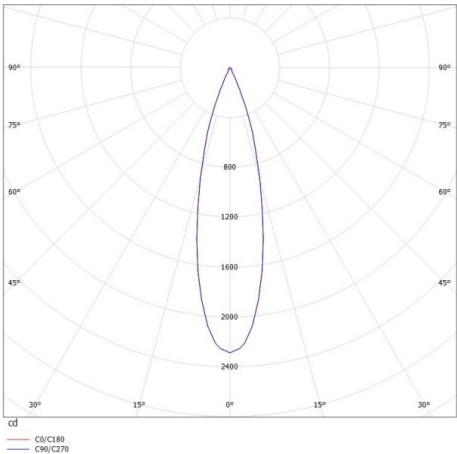


1 - 20 mm

Ø 68 mm, **ET 119 mm**



LIGHT DISTRIBUTION CURVE



TECHNICAL DETAILS

Bulb type	LED 10W
Luminous flux [lm]	600
Current sec. [mA]	250
Colour temp. [K]	2700K
CRI	>90
Converter	with converter
Dimming	see converter
Light output	direct
Beam angle [°]	24°
Voltage [V]	36 VDC
Material	aluminium
Height [mm]	89
Diameter [mm]	72
Ceiling cutout [mm]	68
Recess depth [mm]	119
IP protection class	IP44/IP20
Voltage class	protection cl. III
Net weight [kg]	0,24
Colour lamp	white
RAL	9003
EAN-Number	9010506136777
Lifetime [h]	L80 B10 20 000
Energy efficiency cl.	G



The values are rated values. Power and luminous flux are initially subject to a tolerance of +/- 10%. Colour temperature tolerance: +/- 150 K. The values apply to an ambient temperature of 25°C unless otherwise specified.