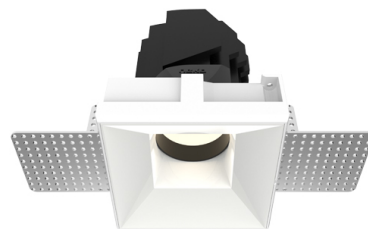


Datasheet

SENSE 150 Square

Manufacture: NEKO LIGHTING AG

Type: SENSE Modular Downlight SLS5-9272825F-WW



General

- Indoor
- Downlight
- Fixed
- Recessed
- Version: trimless square
- Housing: white
- Reflector: white
- IP 20

LED



- 2700K
- CRI 90
- LED Output: 2500lm
- System Output: 1800lm
- 50000h@L80B10
- SDCM: 3

Optics

- Beam angle: 28°
- UGR <19

Electric

- LED Driver: ON-OFF
- LED Power: 25W
- System Power: 28W
- 36V
- 700mA

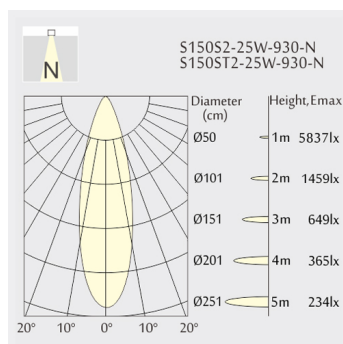
Dimensions

- Measurement: 145mm x 145mm
- Cutout: 147mm x 147mm
- Height: 212mm
- Ceiling height: 262mm
- Net Weight: 1700g
- Gross Weight: 2100g

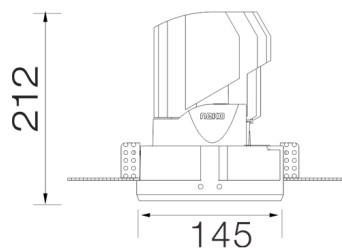
Description

Square recessed ceiling downlight made of die-cast aluminium with white powder-coating finish (RAL 9016) and white reflector; ON-OFF Driver; LED 25W; measurement 145mm x 145mm; ceiling cutout of 147mm x 147mm with a trimless mounting; luminaire's weight is approximately 1700g; CCT 2700K with an LED Output of 2500lm; high color rendering at an index of CRI90; after a lifetime of 50000h min. 80% of the luminous flux with energy efficient CITIZEN LED Chips; 5 years warranty; narrow beam characteristic with 28° beam angle; lighting perfectly suitable for reading, writing as well as computer and control work according to DIN EN 12464-1 (UGR<19); degree of housing protection according to DIN EN 60529 (IP20)

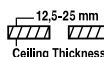
Light distribution



Technical drawing



147x147mm



The technical data represent rated values for an ambient temperature of 25°C. The data values for the luminous flux are initially subject to a tolerance of +/- 10%, those for the electrical connected load are initially subject to a tolerance of +/- 10%, and those for the colour temperature are initially subject to a tolerance of +/- 150 K. No liability is assumed for typographical or printing errors. The general terms and conditions of NEKO Lighting AG apply.