



WEVER & DUCRÉ
LIGHTING

HEXO 1.0 LED

146564G4

Project

Type

Notes

Quantity

Date

GENERAL

Ceiling

Surface

Gold

IP20

Interior

551 lm

LED

3000 K

CRI 80

L70 / 50000 h

3-step binning

OPTICAL

Flood

Beam angle 32°

PHYSICAL

Diameter 127 mm

Height 100 mm

0.72 kg

ELECTRICAL

phase-cut dim

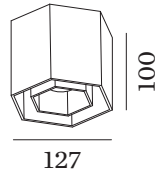
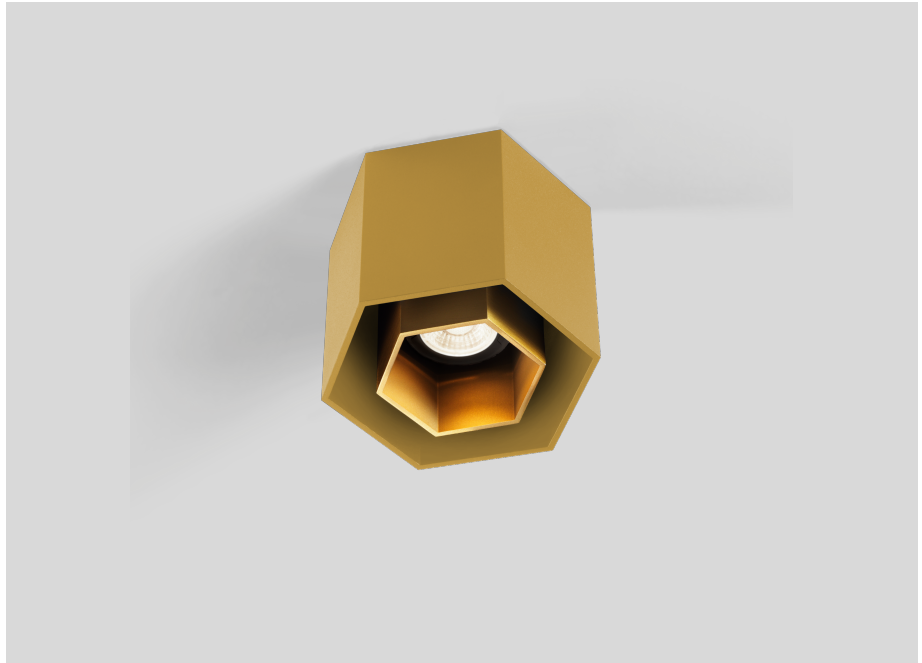
230 V

Total connected power 7.9 W

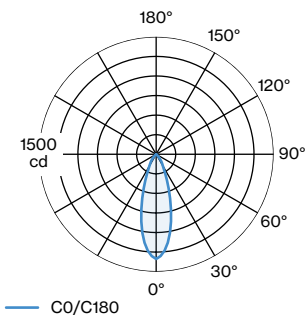
70 lm/W

PC1

0.3 m



LIGHT DISTRIBUTION





WEVER & DUCRÉ
LIGHTING

HEXO 1.0 LED

146564G4

CONE DIAGRAM

flood 32°

h (m)	E0° (lx)	ø (m)
1	1340	0.58
2	334	1.16
3	149	1.73
4	83	2.31
5	53	2.89

Maintenance Factors

Operating Time [h]	10 000	20 000	30 000	40 000	50 000
LLMF	0.94	0.88	0.83	0.77	0.72
LSF	1	1	1	1	1

MF	LMF × RSMF × LLMF × LSF	RSMF ^a	Room Surface Maintenance Factor
MF	Maintenance Factor	LLMF	Lamp Lumens Maintenance Factor
LMF ^a	Luminaire Maintenance Factor	LSF	Lamp Survival Faktor

^a According to "CIE 97, Maintenance of indoor electric lighting systems", 2005, ISBN 3-900-734-34-8. The values must be determined by the planner.

OPTICAL

Single Inner Cover

TYPE	COLOUR	L · W · H (MM)	ORDERCODE
HEXO max. 10W	Jet Black	774-67-54	9 1 1 0 3 1 B 1
HEXO max. 10W	Gold	774-67-54	9 1 1 0 3 1 G 1
HEXO max. 10W	Signal White	774-67-54	9 1 1 0 3 1 W 1